

EXISTING		PROPOSED	
GROSS FLOOR AREA	371,414 SF	380,114 SF	
OCCUPIED AREA	92,712 SF	85,478 SF	
OTHER WORKSPACES	135,815 SF	136,520 SF	
GREEN AREA	219,892 SF	215,797 SF	
LOT AREA	437,795 SF	437,795 SF	
PARKING SPACES	251	233	

PROPOSED 3 STORY ADDITION		AREA	
FLOOR	DESCRIPTION / USE		
1	DINING HALL, DINING	3,700 SF	
2	DINING HALL, DINING	1,000 SF	
3	DINING HALL, DINING	2,200 SF	
	TOTAL AREA	6,700 SF	

PARKING SUMMARY

REQUIRED SPACES (SP - IUS) . . . 99

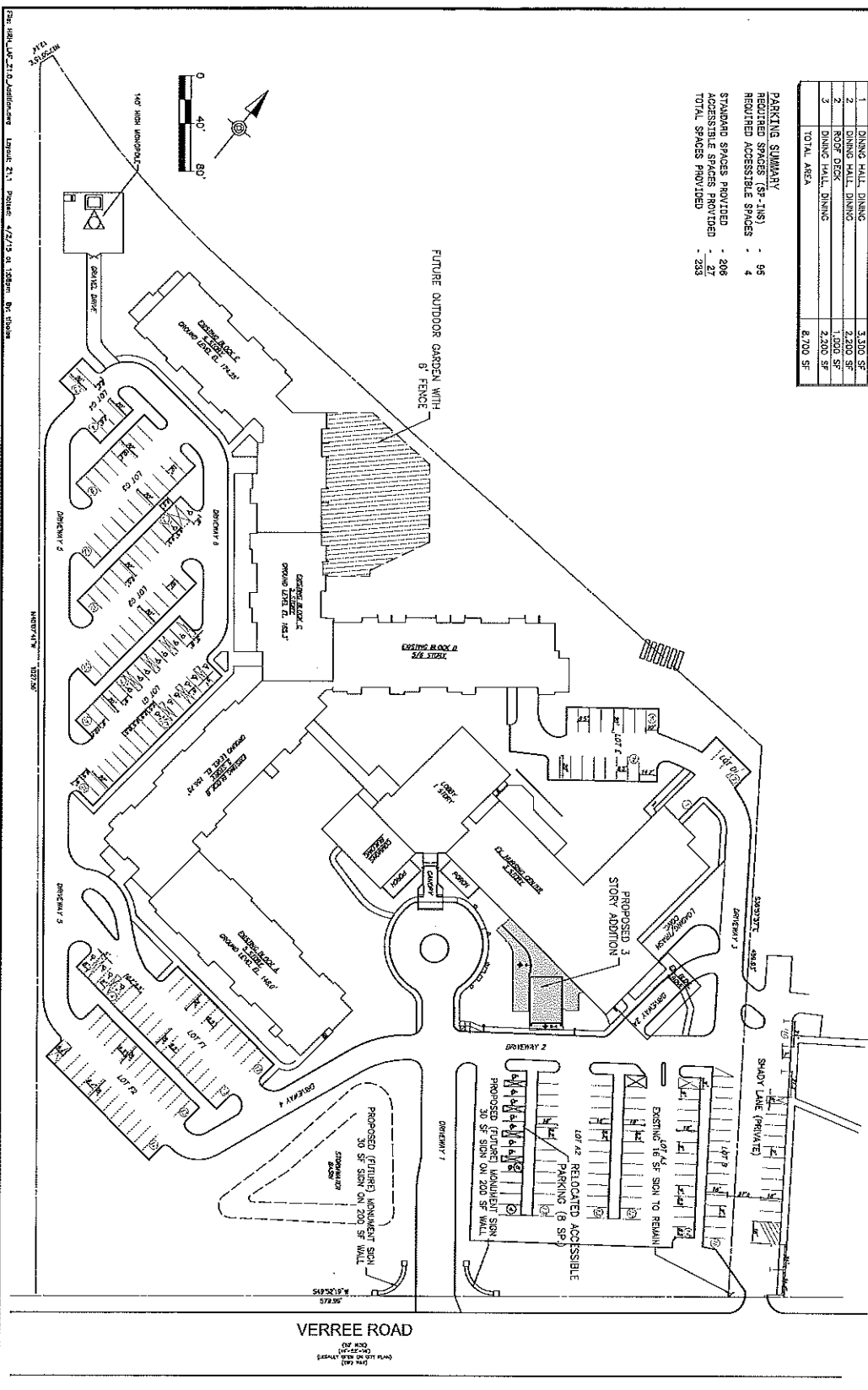
REQUIRED ACCESSIBLE SPACES . . . 4

STANDARD SPACES PROVIDED . . . 208

ACCESSIBLE SPACES PROVIDED . . . 27

TOTAL SPACES PROVIDED . . . 235

NOTE:
THIS SITE PLAN HAS BEEN PREPARED WITH REFERENCES TO CITY OF PHILADELPHIA APPROVED SITE PLAN WHICH WAS PREPARED BY ALBERT TAUBS & ASSOCIATES, ARCHITECTS, SHEET: SP-1-A, DATED 08-28-2008



EWING COLE
Federal Reserve Bank Building
100 North 6th Street
Philadelphia, PA 19106
Tel: 215-581-3000 Fax: 215-581-9582

Consulting Engineer
2400 Chestnut St., Philadelphia, PA, 19103
215-581-0944 (P) 215-581-0911 (F)

Bolas Smyth Associates Inc.
Consulting Civil Engineers
2400 Chestnut St., Philadelphia, PA, 19103
215-581-0944 (P) 215-581-0911 (F)

HOLY REDEEMER HEALTH SYSTEM
LAFAYETTE ADDITION AND RENOVATIONS
1890 VERREE ROAD
PHILADELPHIA, PA 19111

ARCHITECT: Ewing Cole
ENGINEER: Bolas Smyth Associates Inc.
DATE: 08/20/08

PROJECT: ZONING SITE PLAN
DRAWING NO: Z1.1