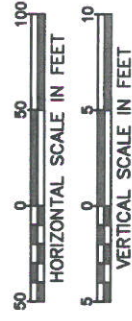


LOCATION MAP
SCALE: 1" = 8000'



DESIGN DESIGNATION

CLASS OF HIGHWAY - PRINCIPAL ARTERIAL ADT 2006 = N/A
 DESIGN SPEED - 35 M.P.H. ADT 2026 = N/A
 PAYEMENT SECTION - VARIES 25' TO 62' DHV = N/A
 MEDIAN WIDTH - NONE D = N/A
 T = N/A



CITY OF PHILADELPHIA

DEPARTMENT OF STREETS

DRAWING AUTHORIZING ACQUISITION
 OF
 RIGHT-OF-WAY
 FOR

THE EXTENSION OF DELAWARE AVENUE
 FROM LEWIS ST. TO BUCKIUS ST.
 STA. 699+50.00 TO STA. 748+39.05

TOTAL LENGTH 4836.12 L.F. 0.9 MI.

PUC APPLICATION DOCKET NUMBER _____

PMS No.	L.E.U.	FEDERAL PROJECT No.	SHEET
		DEPARTMENT OF STREETS No.	
		STATE PROJECT No.	

ALSO INCLUDED :

- SIGNING, PAVEMENT MARKING, AND LIGHTING PLAN - SHEET
- EROSION AND SEDIMENT POLLUTION CONTROL PLAN - SHEET
- STRUCTURE PLAN - SHEET
- CROSS SECTION (UPON REQUEST)

PENNA. DEPT. OF TRANSPORTATION	CITY OF PHILADELPHIA
RECOMMENDED _____ 20 _____ DISTRICT DIRECTIVE	RECOMMENDED: _____ 20 _____ CHIEF ENGINEER AND SURVEYOR
RECOMMENDED _____ 20 _____ DEPUTY SECRETARY	COMMISSIONER - STREETS DEPARTMENT _____ 20 _____
APPROVED _____	

PREPARED BY
 URBAN ENGINEERS INC
 530 WALNUT STREET
 PHILADELPHIA, PENNSYLVANIA

PARCEL PROPERTY OWNERS

NO.	NAME
1	Excelon Generation Company, L.L.C.
2	Philadelphia Electric Company
3	National Railroad Passenger Corporation
4	Robert Holton
5	Transcontinental Gas Pipeline Corporation
6	Delaware River Port Authority
7	Delaware Avenue, L.L.C.
8	Onyx Environmental Services
9	Hedley Street, L.L.P.
10	USF Holland Realty, L.L.C.
11	PIDC Financing Corporation
12	Robert J. Hicks, Jr. and Linda A. Hicks
13	Philadelphia Authority for Industrial Development
14	Coastal Towing Corporation
16	Consolidated Rail Corporation
18	Philadelphia Authority for Industrial Development

LEGEND EXISTING FEATURES

<ul style="list-style-type: none"> Gas Service Sewer Vent Water Service Manhole/Utility Symbol Bell Telephone Co. Electric Bureau High Pressure Fire Service Keystone Telephone Co. Phila. Electric Co. Sewer Steam Water Western Union Catch Basin 	<ul style="list-style-type: none"> Gas Service Sewer Vent Water Service Manhole/Utility Symbol Bell Telephone Co. Electric Bureau High Pressure Fire Service Keystone Telephone Co. Phila. Electric Co. Sewer Steam Water Western Union Catch Basin
---	---

LEGEND PROPOSED FEATURES

<ul style="list-style-type: none"> TC 39.14 - TOP OF CURB ELEVATION BC 38.64 - BOTTOM OF CURB ELEVATION EXISTING CURB TO REMAIN PROPOSED CURB PROPOSED INLET CONNECTION PARALLEL DITCH CUT/FILL SLOPE LINES 	<ul style="list-style-type: none"> PROPOSED INLET OPEN MOUTH GRATE INLET SIZE WITH BICYCLE SAFE GRATE GRATE INLET SIZE C.R. = CURB RADIUS PROPOSED MANHOLE
--	---

LEGEND RIGHT-OF-WAY COLOR SCHEME

	PERMANENT FEE
	EASEMENT
	REQUIRED RIGHT-OF-WAY (CITY OWNED)

LIST OF IDENTIFIED UTILITIES

<p>VERIZON COMMUNICATIONS 900 RACE STREET PHILADELPHIA, PA 19107 ATTENTION: MS. CLAIRE T. ZAPF 215-351-6025</p> <p>PECO ENERGY COMPANY 830 SCHUYLKILL AVENUE PHILADELPHIA, PA 19146 ATTENTION: MR. EDWARD MCBRIDE 215-731-3235</p> <p>PHILADELPHIA WATER DEPARTMENT 1101 MARKET STREET, 2ND FLOOR PHILADELPHIA, PA 19107 ATTENTION: MR. RICH WILLIAMS 215-685-6270</p> <p>MCI WORLDCOM, INC. 630 CLARK AVENUE KING OF PRUSSIA, PA 19406 ATTENTION: MR. CHARLES MATTIS 610-337-6737</p> <p>TRANSCO GAS PIPE LINE CORP. 214 CARNEGIE CIR. - SUITE 300 PRINCETON, NJ 08540-6233 ATTENTION: MR. DANIEL SCHWEITZER 609-497-3838</p>	<p>PHILADELPHIA DEPARTMENT OF STREET LIGHTING DIVISION, RM 900 MS 1401 JFK BOULEVARD PHILADELPHIA, PA 19102 ATTENTION: MR. JOSEPH DOYLE 215-686-5515</p> <p>PHILADELPHIA DEPARTMENT OF STREET TRAFFIC DIVISION, RM 830 MSB 1401 JFK BOULEVARD PHILADELPHIA, PA 19102 ATTENTION: MR. MICHAEL JONES 215-686-6691</p> <p>PHILADELPHIA GAS WORKS 800 W. MONTGOMERY AVENUE PHILADELPHIA, PA 19122 ATTENTION: MR. RANDALL GYORY 215-684-6364</p> <p>SUNESYS 202 TITUS AVENUE WARRINGTON, PA 18976 ATTENTION: MR. DAVE HAYWARD 267-927-2033</p>
--	--

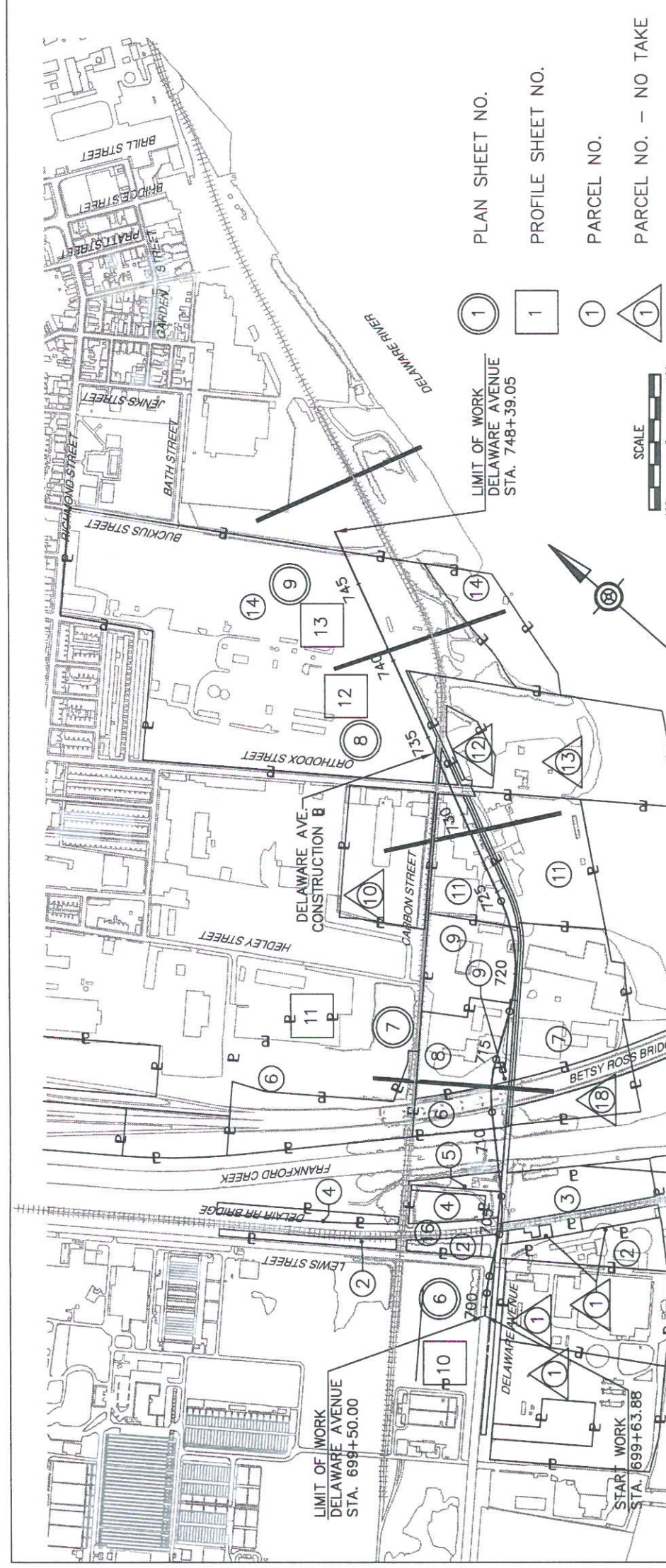
PURSUANT TO REQUIREMENTS OF ACT 187 (1996), REFERRED TO AS THE UNDERGROUND UTILITY LINE PROTECTION LAW, WHICH AMENDED ACT 287 (1974) OF THE LEGISLATURE OF THE COMMONWEALTH OF PENNSYLVANIA, THE CONTRACTOR IS REQUIRED TO NOTIFY ALL UTILITIES WHETHER OR NOT NOTED ABOVE, NOT LESS THAN THREE (3) NOR MORE THAN TEN (10) WORKING DAYS PRIOR TO BEGINNING WORK. SERIAL # FOR THIS PROJECT IS #1926211.

SHEET INDEX

DESCRIPTION	SHEET NO.
TITLE SHEET	1 OF 1
INDEX PLAN	2 OF 1
TYPICAL SECTIONS & GENERAL NOTES	3,4 OF 1
SUPERELEVATION TRANSITIONS & PROJECT COORDINATES	5 OF 1
ROADWAY PLANS	6,7,8,9 OF 1
PROFILES	10,11,12,13 OF 1

NUMBER	REVISIONS	DATE

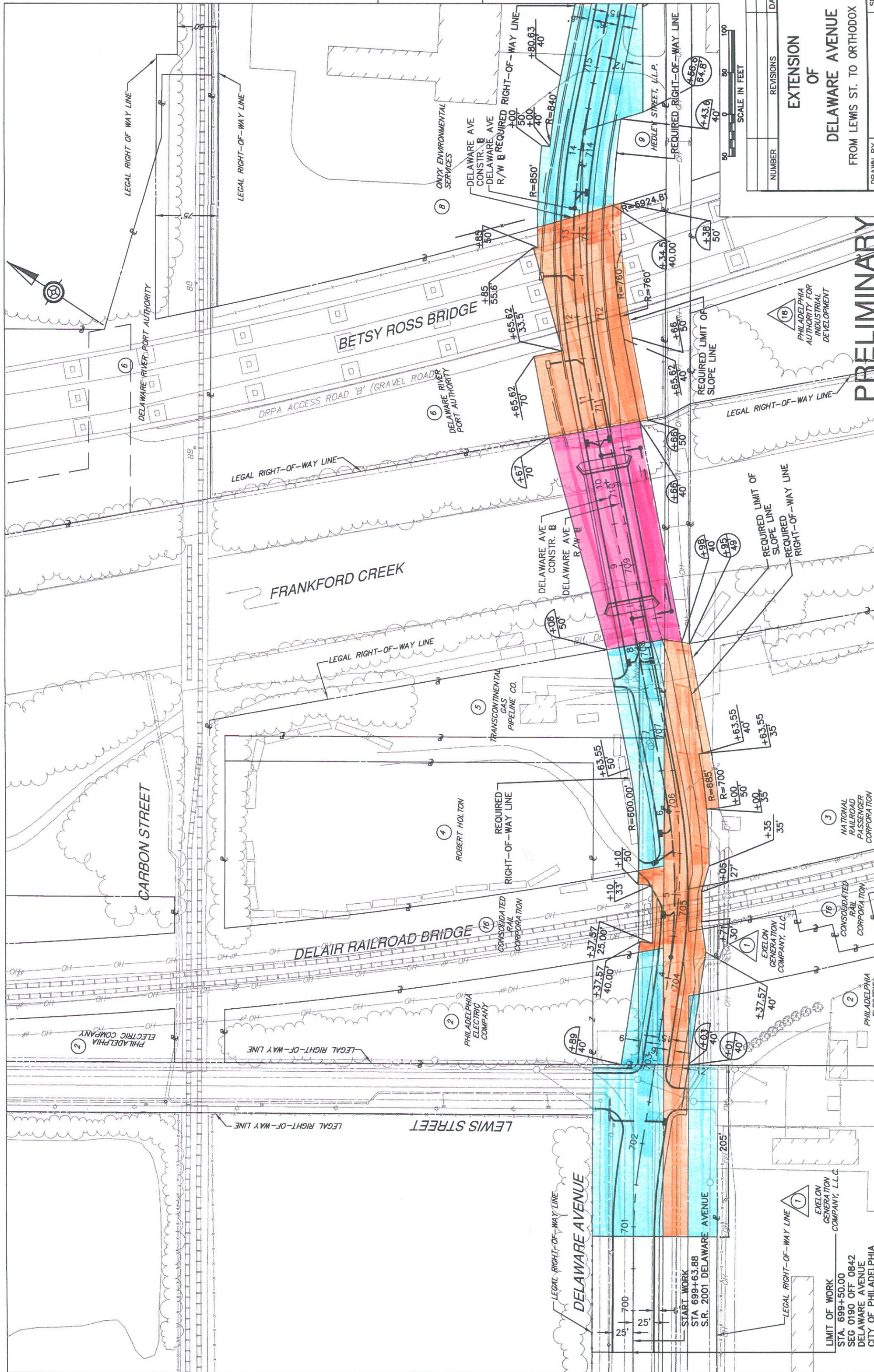
EXTENSION OF DELAWARE AVENUE
FROM LEWIS ST. TO BUCKIUS ST.



DDEI IMINIADPV

DELaware

DELaware



NUMBER	REVISIONS	DATE

EXTENSION OF DELAWARE AVENUE FROM LEWIS ST. TO ORTHODOX ST.

PRELIMINARY



LIMIT OF WORK
STA. 699+50.00
SEG 0190 OFF 0842
DELaware AVENUE
CITY OF PHILADELPHIA

(3) NATIONAL RAILROAD PASSENGER CORPORATION

(2) PHILADELPHIA ELECTRIC COMPANY

(1) EXELON GENERATION COMPANY, L.L.C.

(16) CONSOLIDATED RAIL CORPORATION

(18) PHILADELPHIA AUTHORITY FOR INDUSTRIAL DEVELOPMENT

(8) ONYX ENVIRONMENTAL SERVICES

(9) HEDLEY STREET, L.L.P.

(4) ROBERT HOLTON

(5) TRANSCONTINENTAL GAS PIPELINE CO.

(6) DELaware RIVER PORT AUTHORITY

(7) PHILADELPHIA ELECTRIC COMPANY

(10) DELaware AVENUE CONSTR. B

(11) DELaware AVENUE R/W B

(12) DELaware AVENUE R/W B

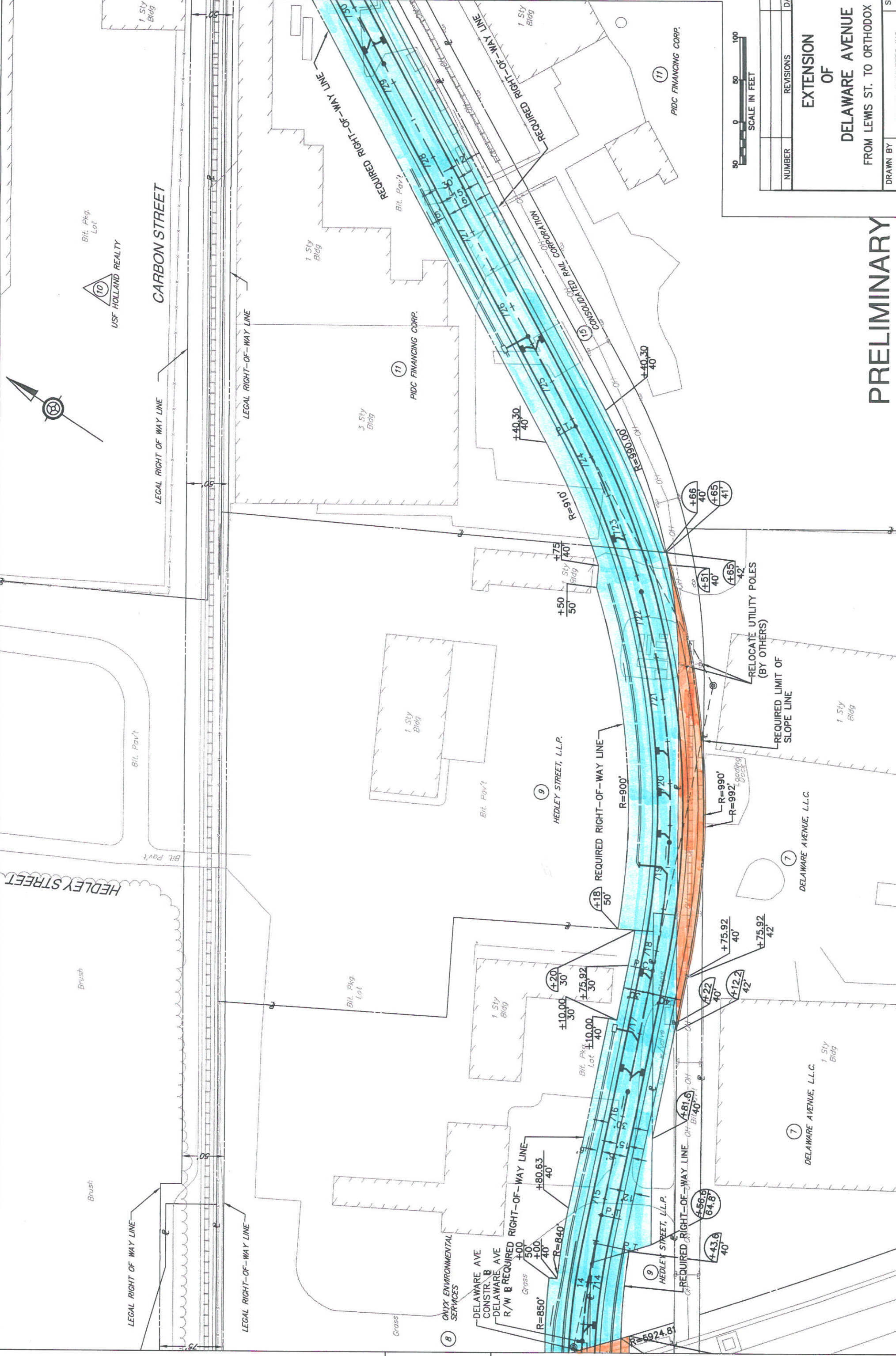
(13) DELaware AVENUE R/W B

(14) DELaware AVENUE R/W B

(15) DELaware AVENUE R/W B

DELAWARE AVENUE

DELAWARE AVENUE



NUMBER	REVISIONS	DAT

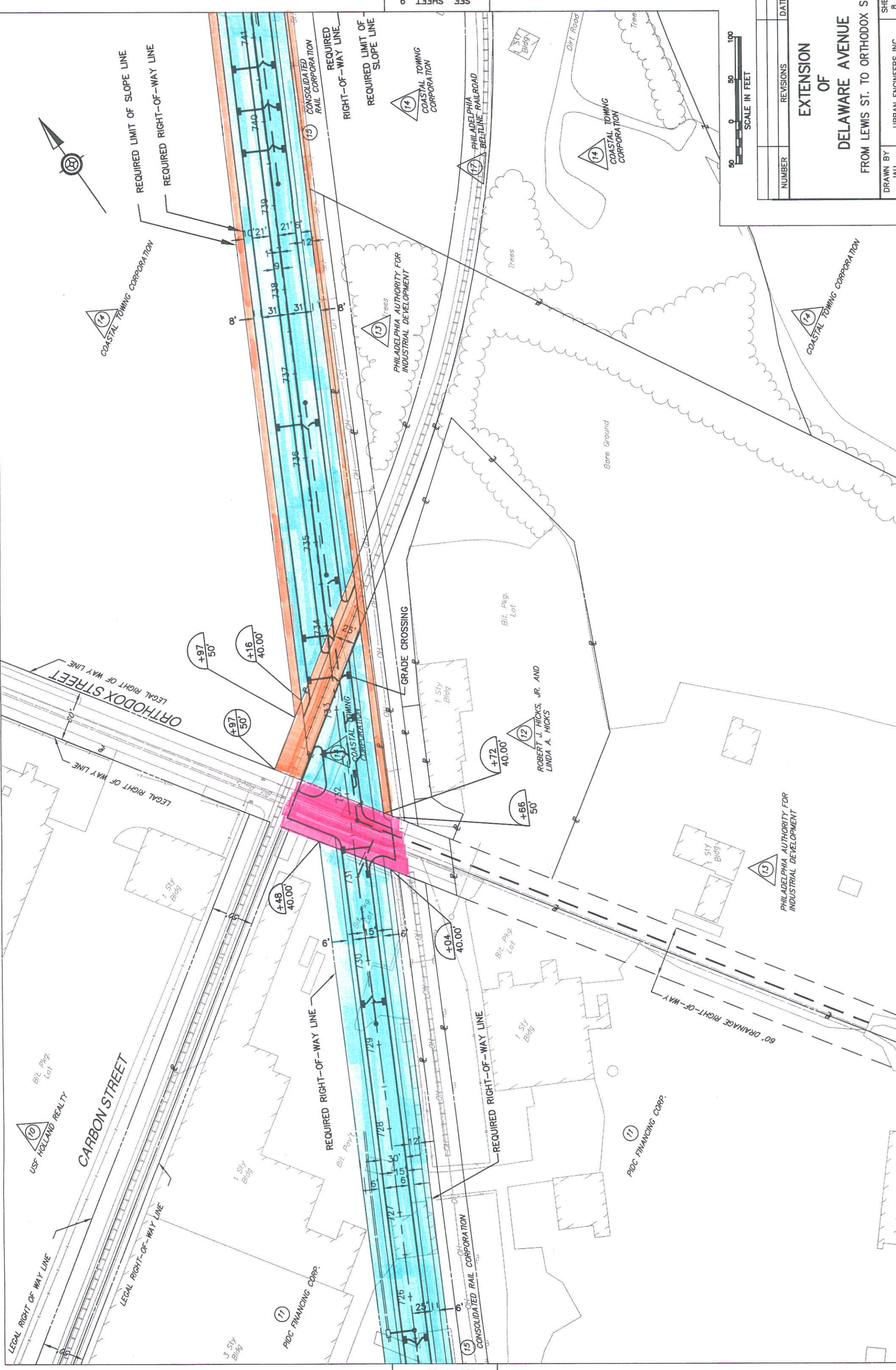
**EXTENSION OF
DELAWARE AVENUE**

FROM LEWIS ST. TO ORTHODOX S

DRAWN BY: [Redacted] SHI

PRELIMINARY

SEE SHEET 5



SEE SHEET 7

SEE SHEET 9



NUMBER	REVISIONS	DATE

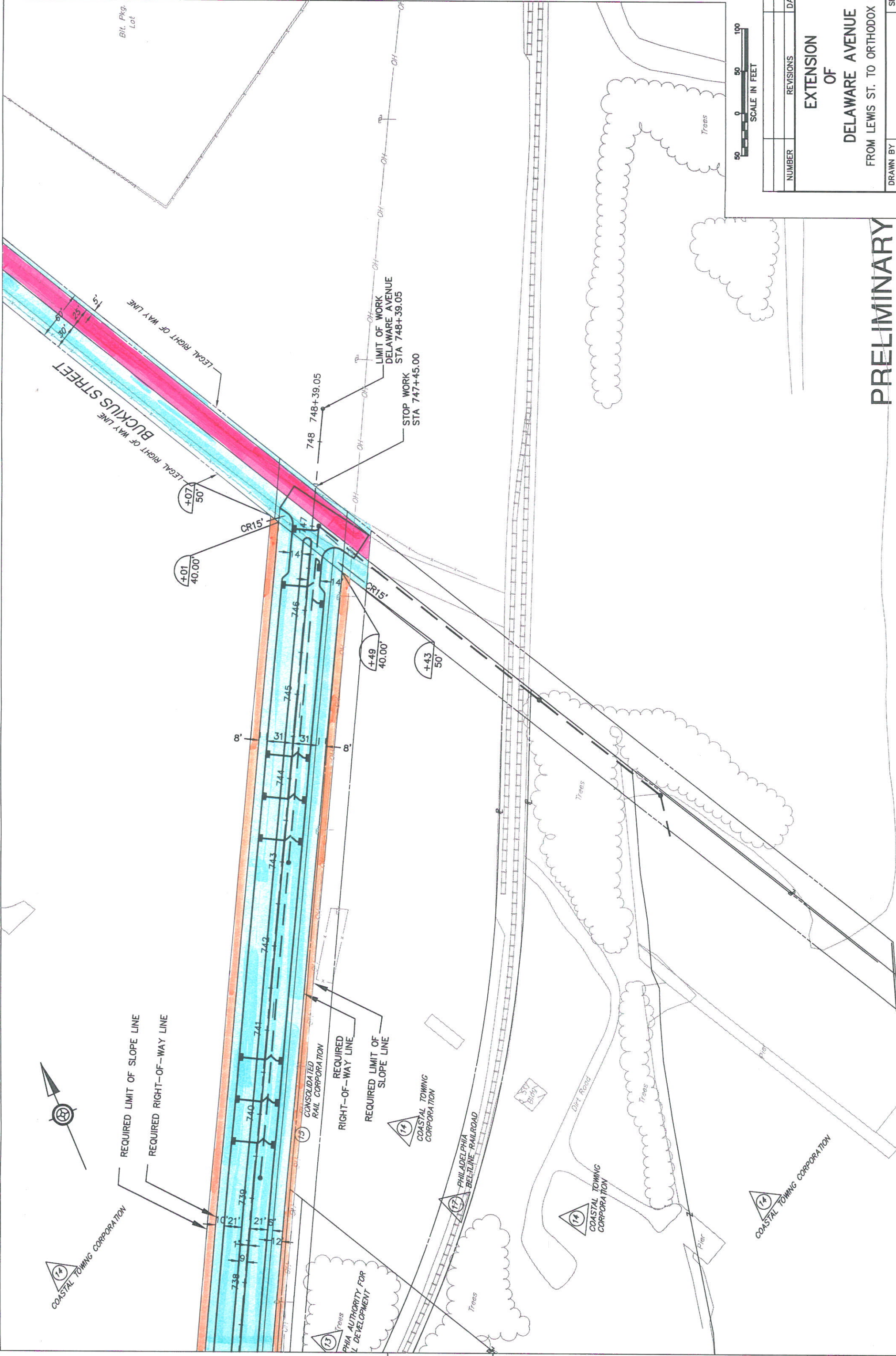
EXTENSION OF DELAWARE AVENUE FROM LEWIS ST. TO ORTHODOX ST

DRAWN BY JAU
URBAN ENGINEERS INC.
SHEET 8 OF 8

DELAWARE

DELAWARE

DELAWARE



Bit. Pkg.
Lot



NUMBER	REVISIONS	DATE

EXTENSION
OF
DELAWARE AVENUE

FROM LEWIS ST. TO ORTHODOX ST

DRAWN BY

SHEET

PRELIMINARY

SEE SHEET 8



REQUIRED LIMIT OF SLOPE LINE
REQUIRED RIGHT-OF-WAY LINE

REQUIRED LIMIT OF SLOPE LINE
REQUIRED RIGHT-OF-WAY LINE

CONSOLIDATED
RAIL CORPORATION

COASTAL TOWING CORPORATION

PHILADELPHIA
BELTLINE RAILROAD

COASTAL TOWING CORPORATION

COASTAL TOWING CORPORATION

PHIA AUTHORITY FOR
L DEVELOPMENT

Dirt Road

Pier

Pier

Pier

Trees

Trees

Trees

Trees