

City of Philadelphia



(Bill No. 161004)

AN ORDINANCE

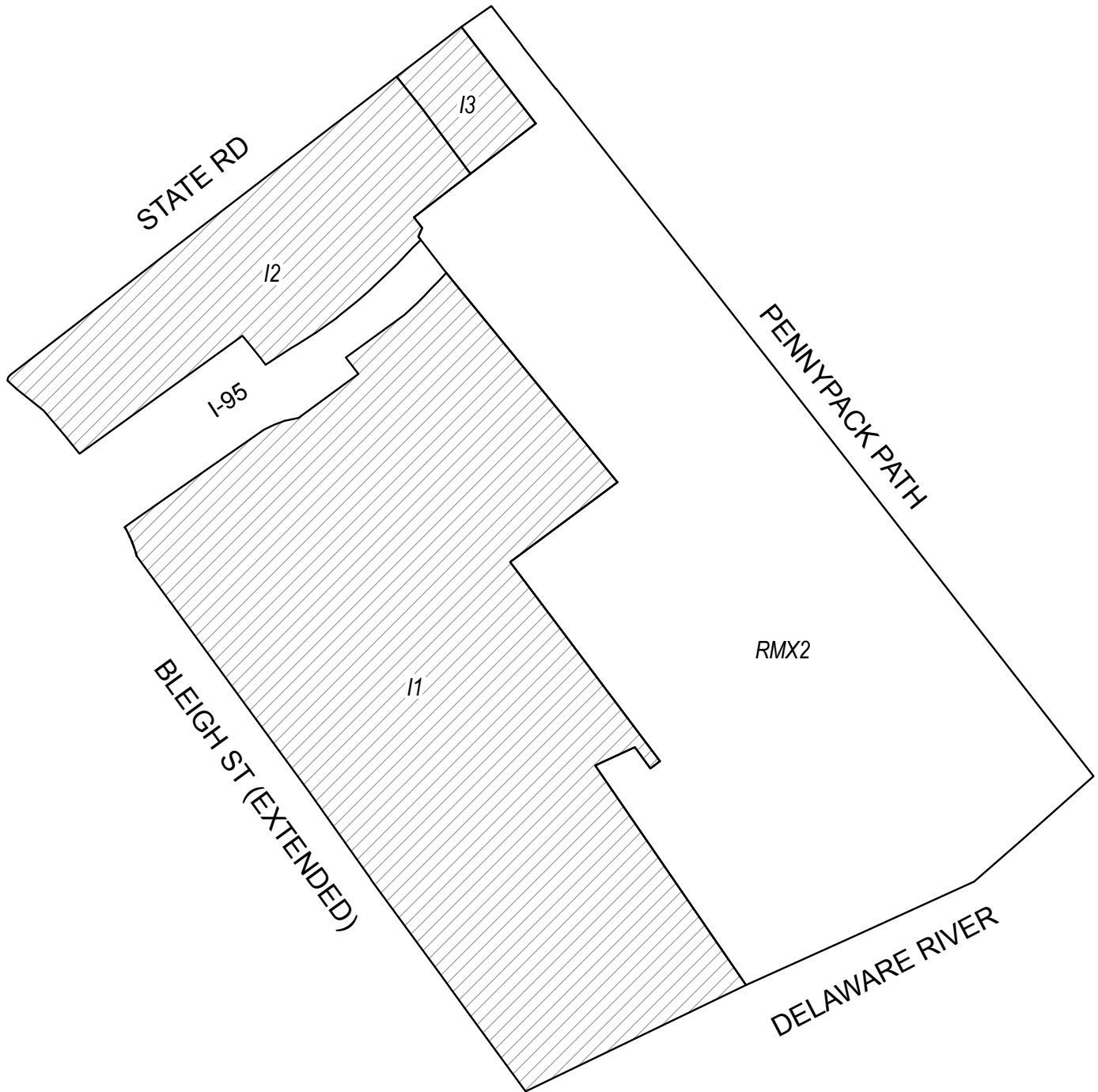
To amend the Philadelphia Zoning Maps by changing the zoning designations of certain areas of land located within an area bounded by State Road, Pennypack Path, the Delaware River, and Bleigh Street (extended).

THE COUNCIL OF THE CITY OF PHILADELPHIA HEREBY ORDAINS:

SECTION 1. Pursuant to Section 14-106 of The Philadelphia Code, The Philadelphia Zoning Maps are hereby amended by changing the zoning designations of certain areas of land within an area bounded by State Road, Pennypack Path, the Delaware River, and Bleigh Street (extended) from the existing zoning designations indicated on Map “A” set forth below to the zoning designations indicated on Map “B” set forth below.

SECTION 2. This Ordinance shall become effective immediately.

Map A Existing Zoning



Zoning Districts



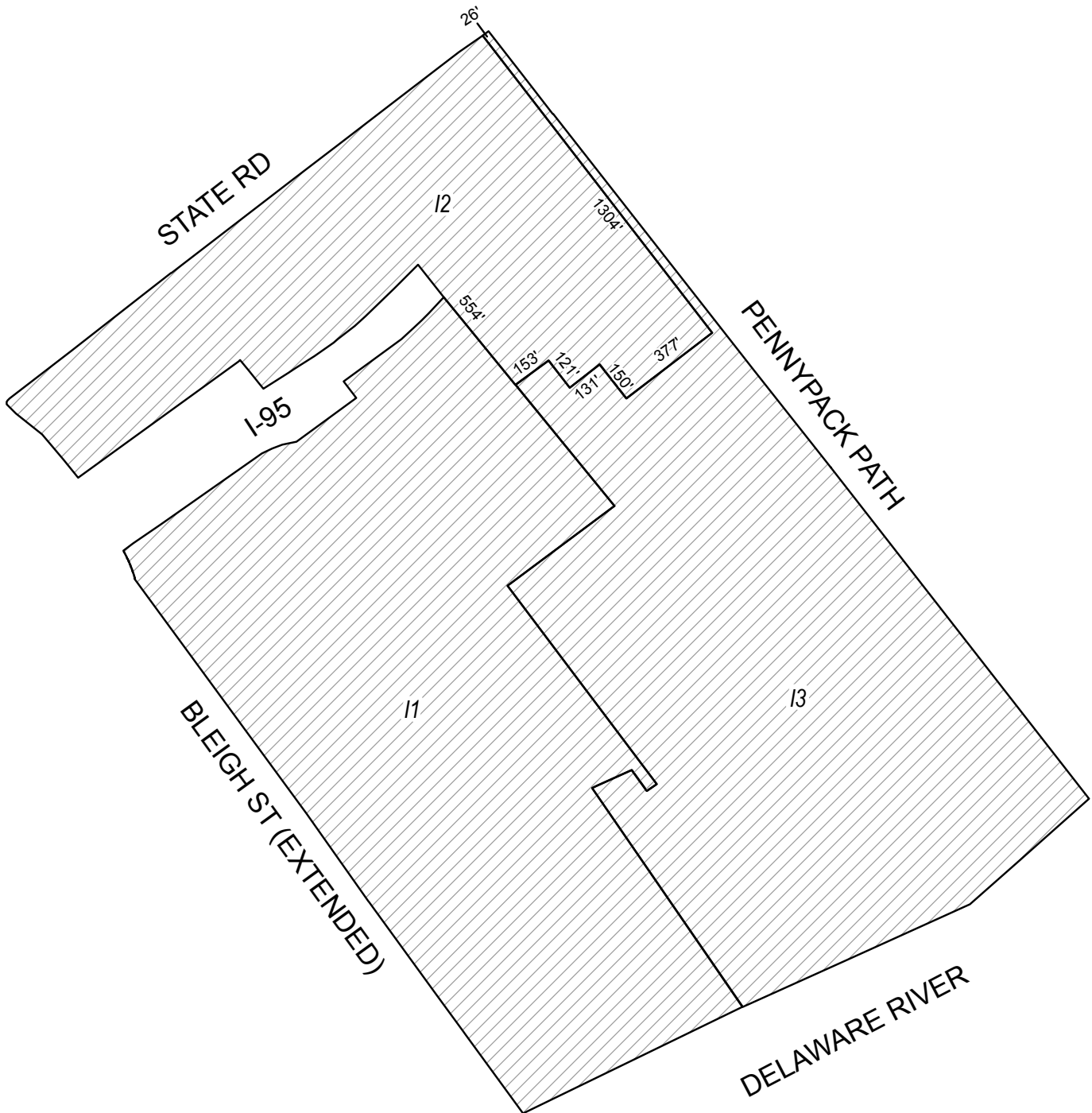
I-1 Light Industrial, I-2 Medium Industrial, I-3 Heavy Industrial



RMX-2 Residential Mixed-Use



Map B Proposed Zoning



Zoning Districts



I-1 Light Industrial, I-2 Medium Industrial, I-3 Heavy Industrial



City of Philadelphia

BILL NO. 161004 continued

Certified Copy

CERTIFICATION: This is a true and correct copy of the original Bill, Passed by the City Council on April 20, 2017. The Bill was Signed by the Mayor on April 26, 2017.



Michael A. Decker
Chief Clerk of the City Council