



City of Philadelphia

City Council
Chief Clerk's Office
402 City Hall
Philadelphia, PA 19107

**BILL NO. 060580
(As Amended, 9/28/06)**

Introduced June 15, 2006

Councilmember Nutter

**Referred to the
Committee on Rules**

AN ORDINANCE

To amend the Philadelphia Zoning Maps by changing the zoning designations of certain areas of land located within an area bounded by W. Coulter Street, Stokely Street, Midvale Avenue and McMichael Street.

THE COUNCIL OF THE CITY OF PHILADELPHIA HEREBY ORDAINS:

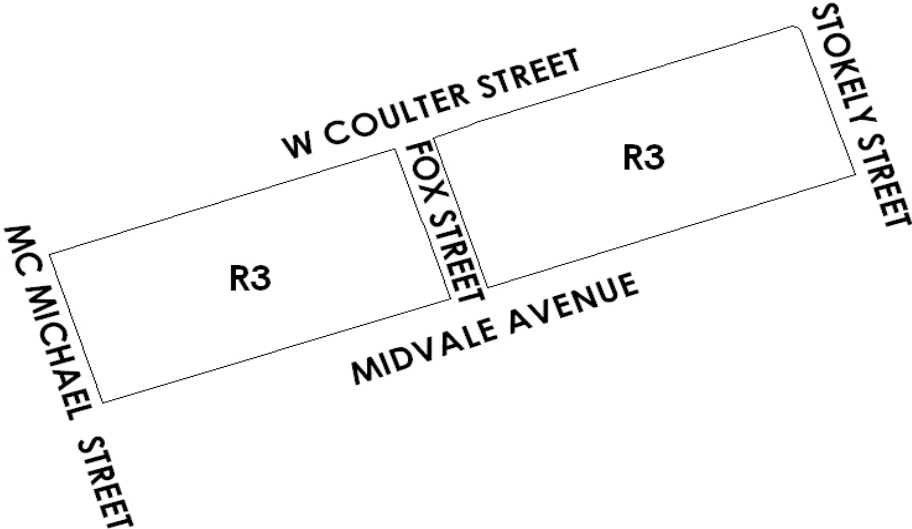
SECTION 1. Pursuant to Section 14-103 of The Philadelphia Code, The Philadelphia Zoning Maps are hereby amended by changing the zoning designations of certain areas of land within an area bounded by W. Coulter Street, Stokely Street, Midvale Avenue and McMichael Street from the existing zoning designations indicated on Map "A" set forth below to the zoning designations indicated on Map "B" set forth below.

SECTION 2. This Ordinance shall become effective immediately.

City of Philadelphia

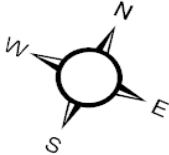
BILL NO. 060580, as amended continued

MAP A EXISTING ZONING



Legend

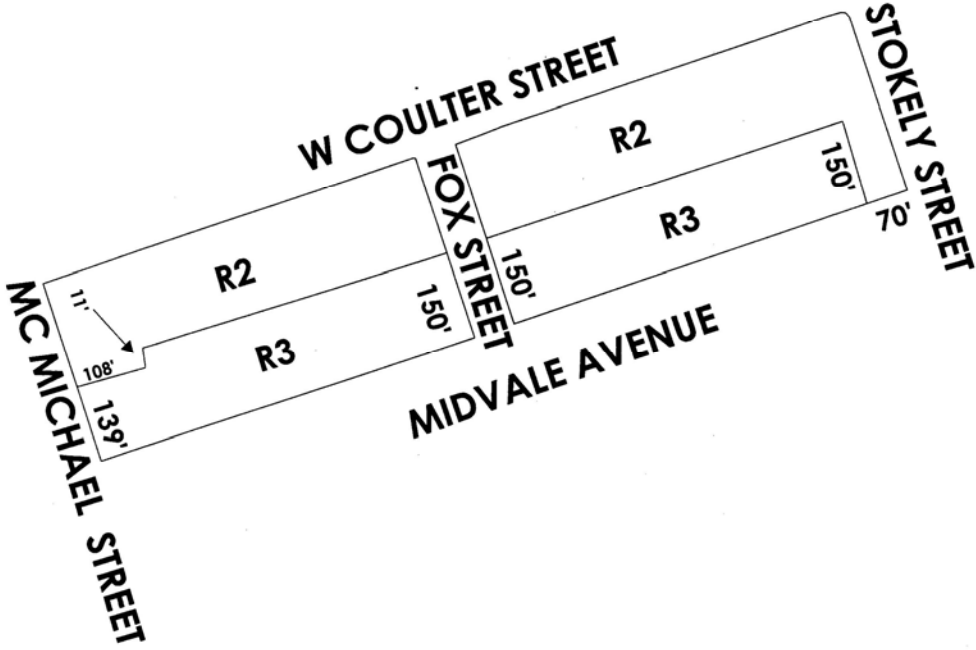
3 Residential R3



City of Philadelphia

BILL NO. 060580, as amended continued

MAP B PROPOSED ZONING



Legend

- 2** Residential R2
- 3** Residential R3



City of Philadelphia

BILL NO. 060580, as amended continued