



City of Philadelphia

City Council
Chief Clerk's Office
402 City Hall
Philadelphia, PA 19107

BILL NO. 130080

Introduced February 7, 2013

Councilmember Johnson

**Referred to the
Committee on Rules**

AN ORDINANCE

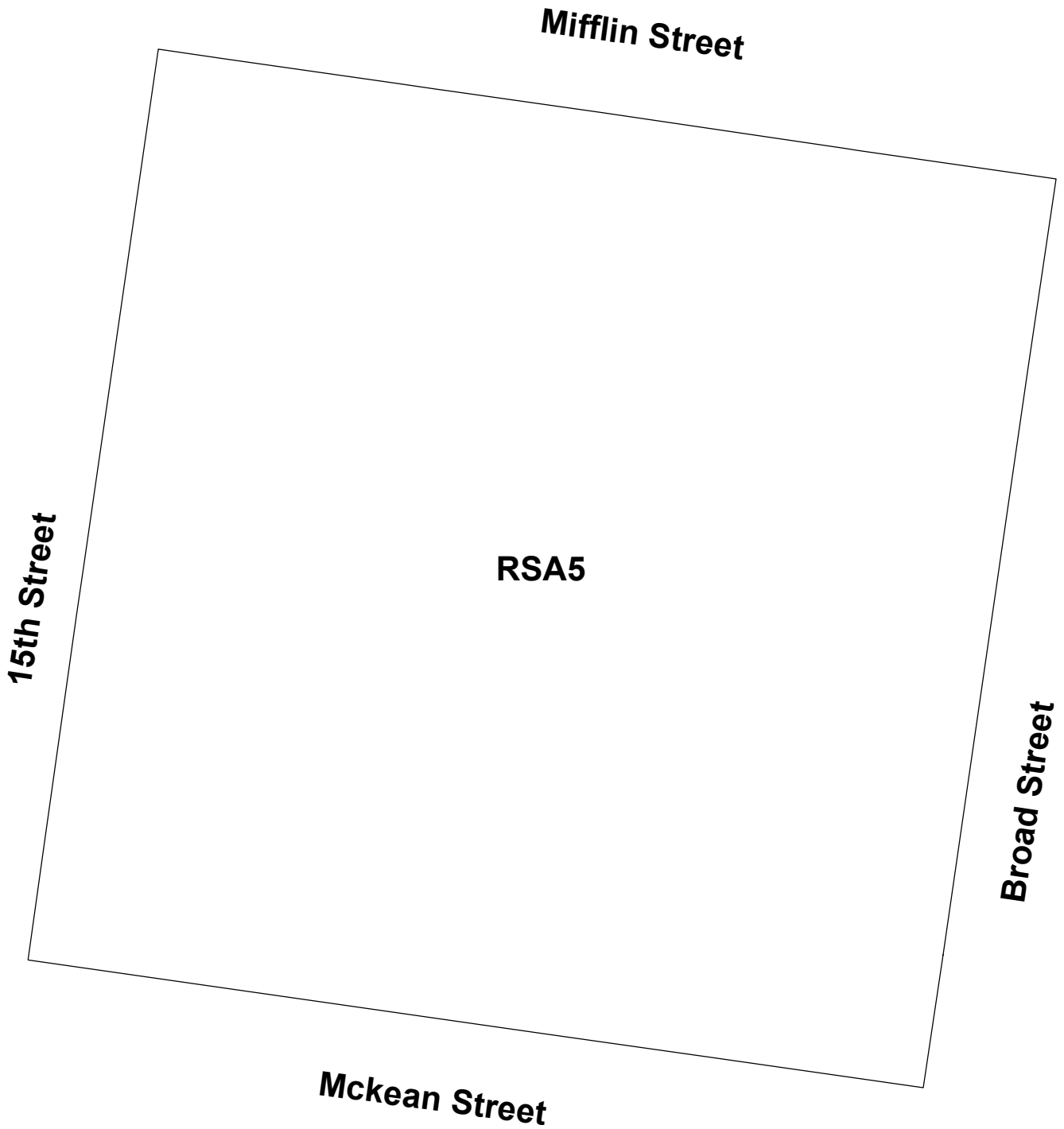
To amend the Philadelphia Zoning Maps by changing the zoning designations of certain areas of land located within an area bounded by Mifflin Street, Broad Street, Mckean Street and 15th Street.

THE COUNCIL OF THE CITY OF PHILADELPHIA HEREBY ORDAINS:

SECTION 1. Pursuant to Section 14-106 of The Philadelphia Code, the Philadelphia Zoning Maps are hereby amended by changing the zoning designations of certain areas of land within an area bounded by Mifflin Street, Broad Street, Mckean Street and 15th Street, from the existing zoning designations indicated on Map "A" set forth below to the zoning designations indicated on Map "B" set forth below.

SECTION 2. This Ordinance shall become effective immediately.

City of Philadelphia MAP A - EXISTING ZONING

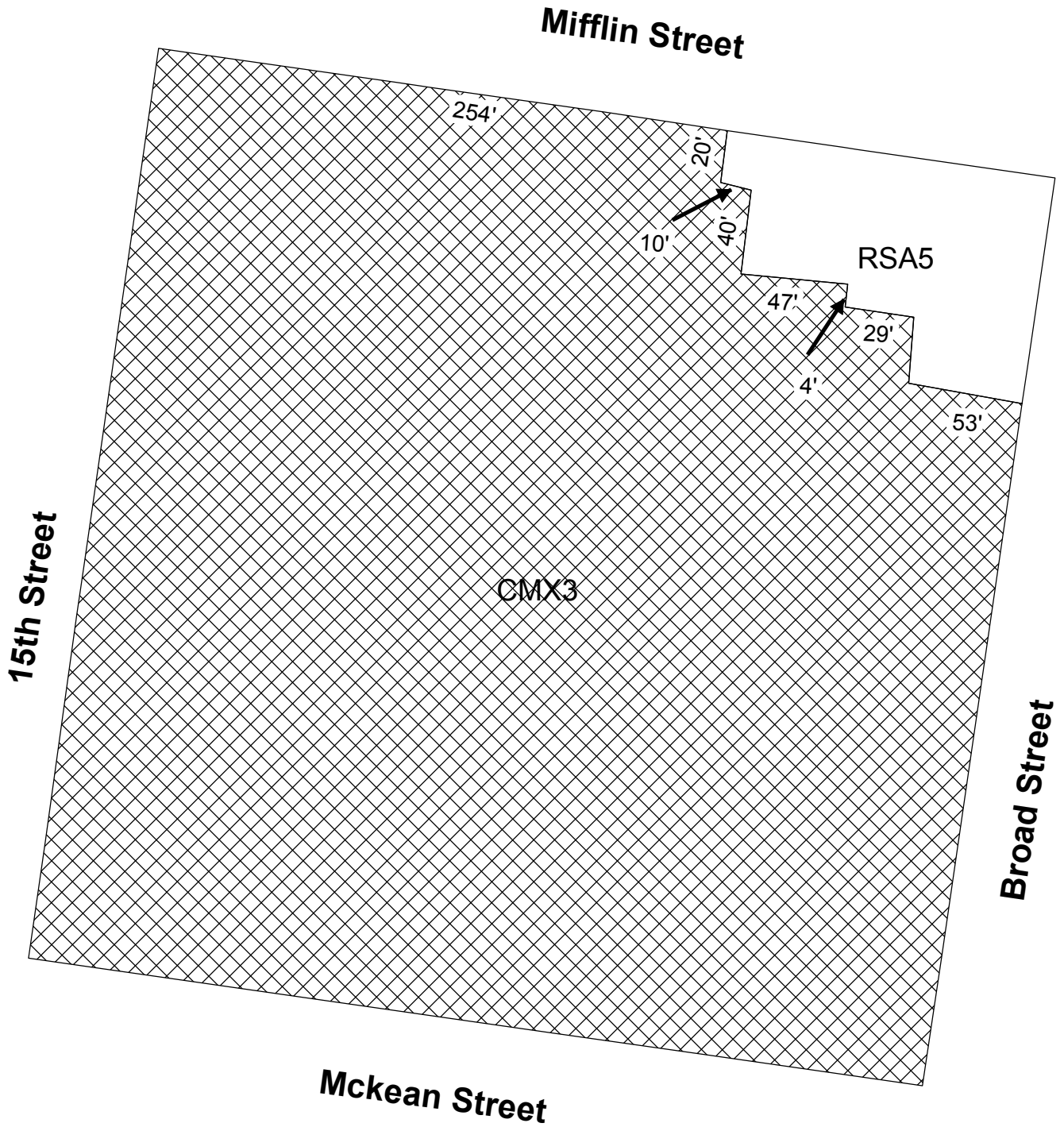


Legend



RSA5 RSA5 Residential Single Attached
City of Philadelphia



City of Philadelphia MAP B - PROPOSED ZONING



Legend

-  CMX3 Commercial Mixed Use
-  RSA5 Residential Single Attached



City of Philadelphia

BILL NO. 130080 continued