

# City of Philadelphia



(Bill No. 230742)

## AN ORDINANCE

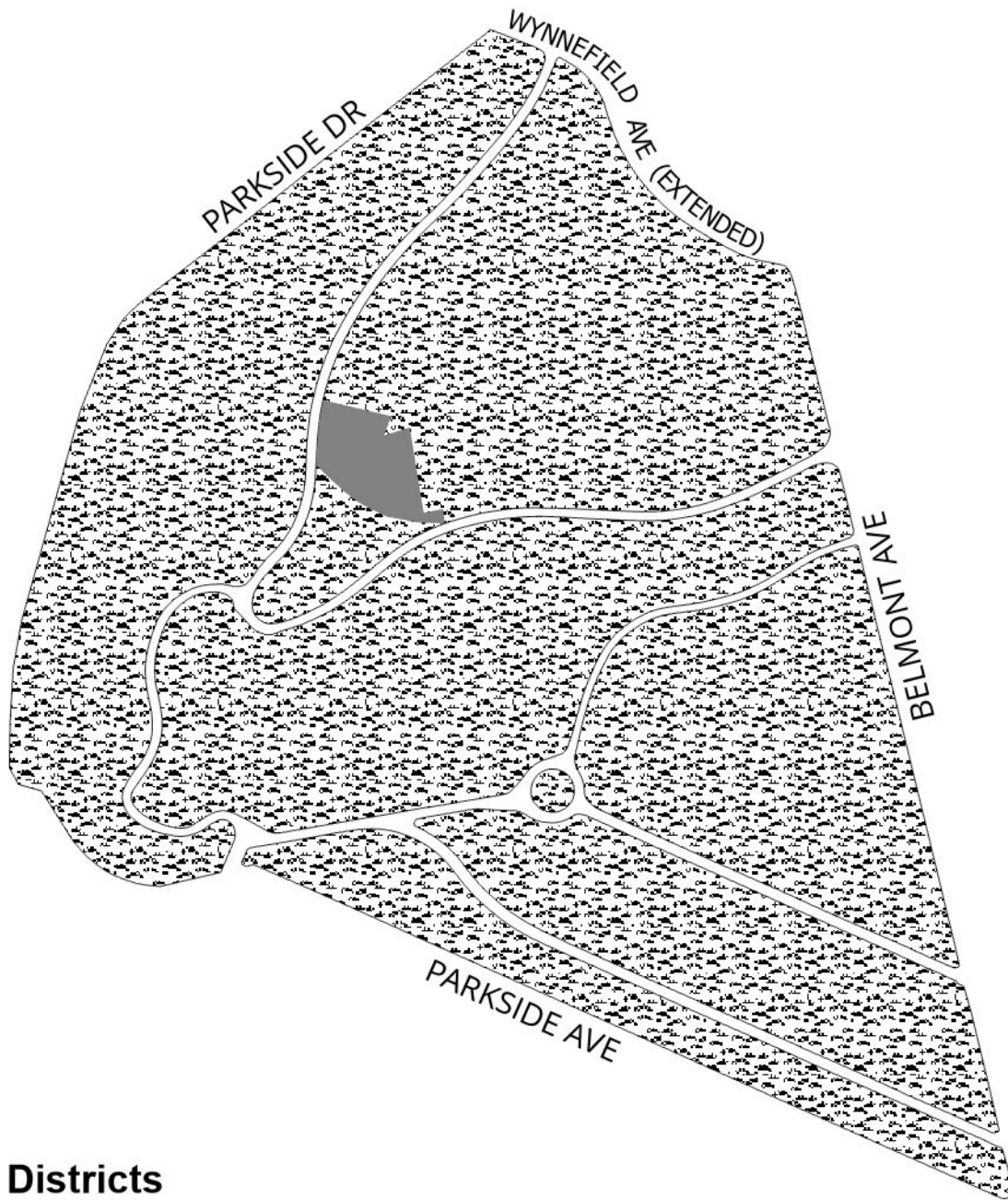
Authorizing Basic Utilities and Services use on a certain location within a section of West Fairmount Park bounded by Wynnefield Avenue (extended), Belmont Avenue, and Parkside Avenue.

*THE COUNCIL OF THE CITY OF PHILADELPHIA HEREBY ORDAINS:*



SECTION 1. Pursuant to Section 14-407(3)(a) of The Philadelphia Code, Basic Utilities and Services use is hereby authorized on the proposed site boundaries as set forth in attached "Exhibit A", "Exhibit B," and "Exhibit C," within a section of West Fairmount Park bounded by Wynnefield Avenue (extended), Belmont Avenue, and Parkside Avenue.

SECTION 2. This Ordinance shall become effective immediately.

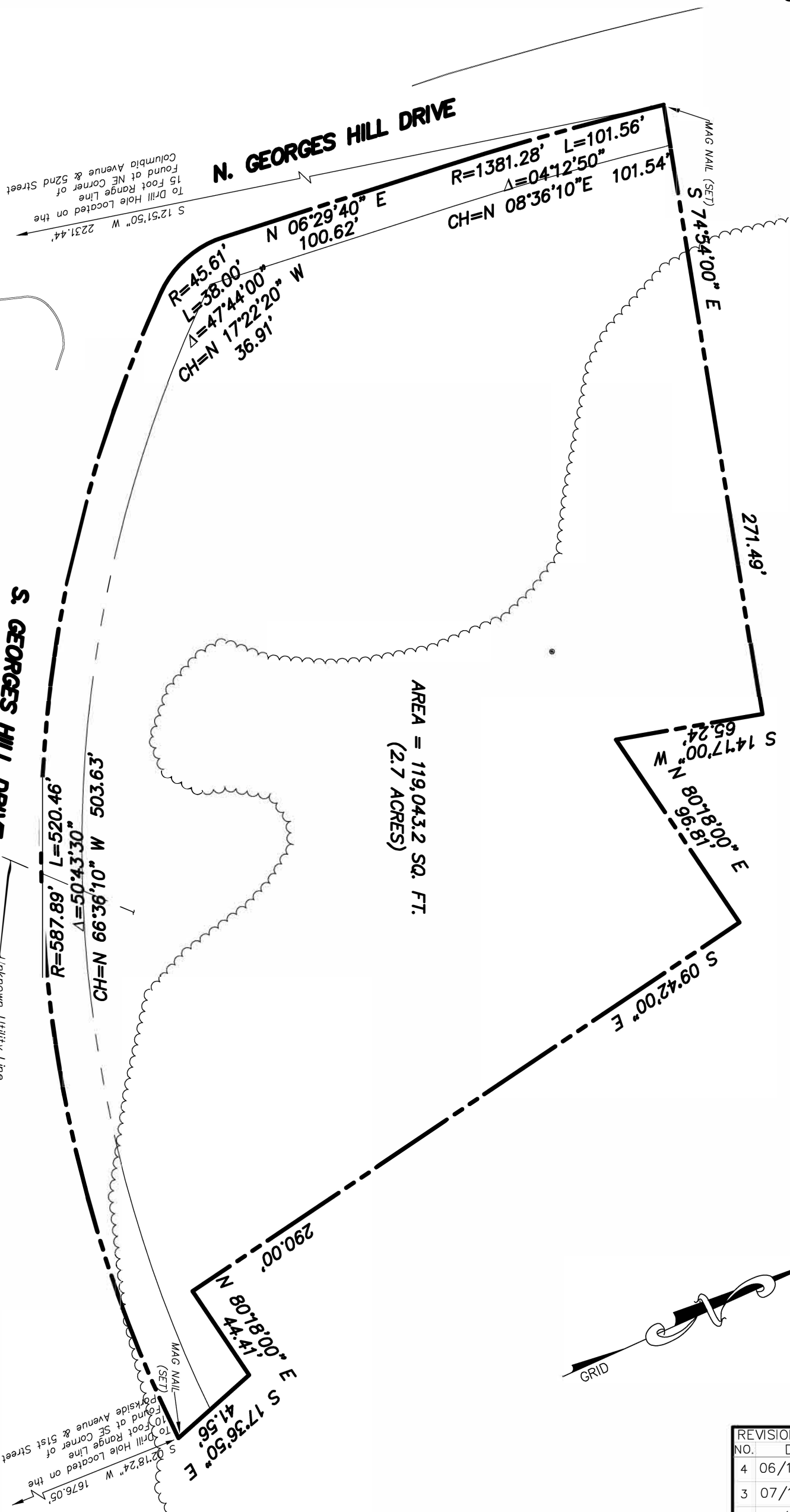
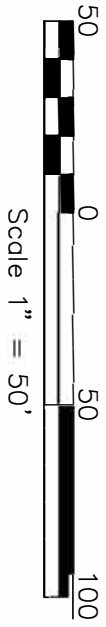
# City of Philadelphia Exhibit A Locator Map



## Zoning Districts

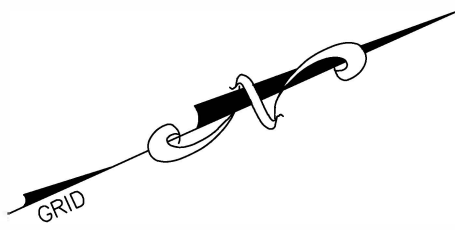
-  SP-PO-A, Parks and Open Space
-  Use Authorization Boundary



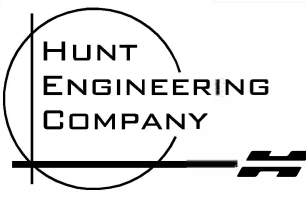


**NOTES**

1. THE PURPOSE OF THE EXHIBIT IS TO GRAPHICALLY DEPICT AN AREA OF LAND TO BE UTILIZED BY THE PHILADELPHIA WATER DEPARTMENT.
2. OWNER OF RECORD: CITY OF PHILADELPHIA C/O PHILADELPHIA PARKS DEPARTMENT.
3. THE POSITIONING OF THE PARCEL SHOWN IS BASED ON THE GRAPHICAL DEPICTION OF THE BELMONT RESERVOIR PARCEL OF 1874 AS SHOWN ON A PLAN BY PHILADELPHIA PARKS & RECREATION TITLED "GEORGE'S HILL - WEST FAIRMOUNT PARK" COMBINED WITH FIELD SURVEYED LOCATIONS OF NORTH GEORGES HILL DRIVE, SOUTH GEORGES HILL DRIVE AND BELMONT AVENUE.
4. EXHIBIT IS NOT BASED ON AN ACTUAL BOUNDARY SURVEY OR A SURVEY OF RANGE LINES FOR NORTH GEORGES HILL DRIVE OR SOUTH GEORGES HILL DRIVE.
5. ALL MEASUREMENTS SHOWN ARE IN PHILADELPHIA DISTRICT STANDARD MEASURE.
6. DATUM: HORIZONTAL = PENNSYLVANIA STATE PLANE COORDINATE SYSTEM, SOUTH ZONE, NAD 83.
7. THE BASIS OF BEARING IS GRID NORTH. THE LOCATIONS OF ALL EXISTING UTILITIES SHOWN HEREON SHALL BE CONSIDERED APPROXIMATE. THE UNDERGROUND UTILITY INFORMATION HAS BEEN DEVELOPED FROM FIELD MARKINGS PROVIDED BY TRINITY SUBSURFACE ENGINEERING ON 8/20/2019 AND 8/21/2019. THE COMPLETENESS AND ACCURACY OF THE TYPE, SIZE, DEPTH, OR HORIZONTAL LOCATION OF UNDERGROUND UTILITIES AND FACILITIES CANNOT BE GUARANTEED. PURSUANT TO THE REQUIREMENTS OF PENNSYLVANIA LEGISLATIVE ACT NUMBER 287 OF 1974, AND AMENDMENTS THEREOF, CONTRACTORS MUST VERIFY THE LOCATION AND DEPTH OF ALL UNDERGROUND UTILITIES AND FACILITIES PRIOR TO THE START OF WORK.



REVISION NO.	DATE
4	06/15/2022
3	07/17/2019
2	07/11/2019
1	04/15/2019



PLAN OF PROPERTY  
**NEW ADMINISTRATIVE  
 AREA FOR PHILADELPHIA WATER DEPARTMENT**  
 SITUATE AT NORTH GEORGES HILL ROAD, CITY OF PHILADELPHIA, PENNSYLVANIA

SCALE: 1"=50'	DWG NAME: 2194003Ebase	PROJECT NO: 2194003	SHEET NO. <b>1</b>
DRAWN BY: M. KILBY	CHECK BY: S. REESER	DATE: 04/11/2019	SHEET: 1 OF 1

**LEGAL DESCRIPTION****PWD Use Area**

All that certain parcel or tract of land situate at the intersection of North and South Georges Drives in Fairmont Park within the City of Philadelphia, Commonwealth of Pennsylvania, being commonly known Georges Hill and being graphically shown on a plan prepared by Hunt Engineering Company entitled "Georges Hill Pump Station", dated April 11, 2019, last revised June 15, 2022. Said parcel of land being more particularly described as follows:

**BEGINNING at a MAG NAIL** on the east side of North Georges Hill Drive;

Thence along lands formerly known as Belmont Reservoir, now Fairmont Park, the following five (5) courses and distances:

- South 74 degrees 54 minutes 00 seconds East, a distance of 271.49 feet;
- South 14 degrees 17 minutes 00 seconds West, a distance of 65.24 feet;
- North 80 degrees 18 minutes 00 seconds East, a distance of 96.81 feet;
- South 09 degrees 42 minutes 00 seconds East, a distance of 290.00 feet;
- North 80 degrees 18 minutes 00 seconds East, a distance of 44.41 feet;

Thence through lands of Fairmont Park, South 17 degrees 36 minutes 50 seconds East, a distance of 41.56 feet, to a mag nail on the north side of South Georges Hill Drive;

Thence along the north side of South Georges Hill Drive, on a curve to the right having a radius of 587.89 feet, an arc length of 520.46 feet, a central angle of 50 degrees 43 minutes 30 seconds, a chord bearing North 66 degrees 36 minutes 10 seconds West and a chord distance of 503.63 feet, to a point;

Thence on a curve to the right having a radius of 45.61 feet, an arc length of 38.00 feet, a central angle of 47 degrees 44 minutes 00 seconds, a chord bearing North 17 degrees 22 minutes 20 seconds West and a chord distance of 36.91 feet, to a point on the east side of North Georges Hill Drive;

Thence along the east side of North Georges Hill Drive, North 06 degrees 29 minutes 40 seconds East, a distance of 100.62 feet;

Thence along the same, on a curve to the right having a radius of 1,381.28 feet, an arc length of 101.56 feet, a central angle of 04 degrees 12 minutes 50 seconds, a chord bearing North 08 degrees 36 minutes 10 seconds East and a chord distance of 101.54 feet, to a mag nail on the east side of North Georges Hill Drive, said point being the **POINT of BEGINNING**.

Containing 119,043.2 square feet (2.7 acres) in area.

The basis of bearings for the above being grid North as derived from the Pennsylvania State Plane Coordinate System NAD83. All measurements being in Philadelphia District Standard measure.

# City of Philadelphia

*BILL NO. 230742 continued*

Certified Copy

CERTIFICATION: This is a true and correct copy of the original Bill, Passed by the City Council on December 14, 2023. The Bill was Signed by the Mayor on December 20, 2023.



Michael A. Decker  
Chief Clerk of the City Council