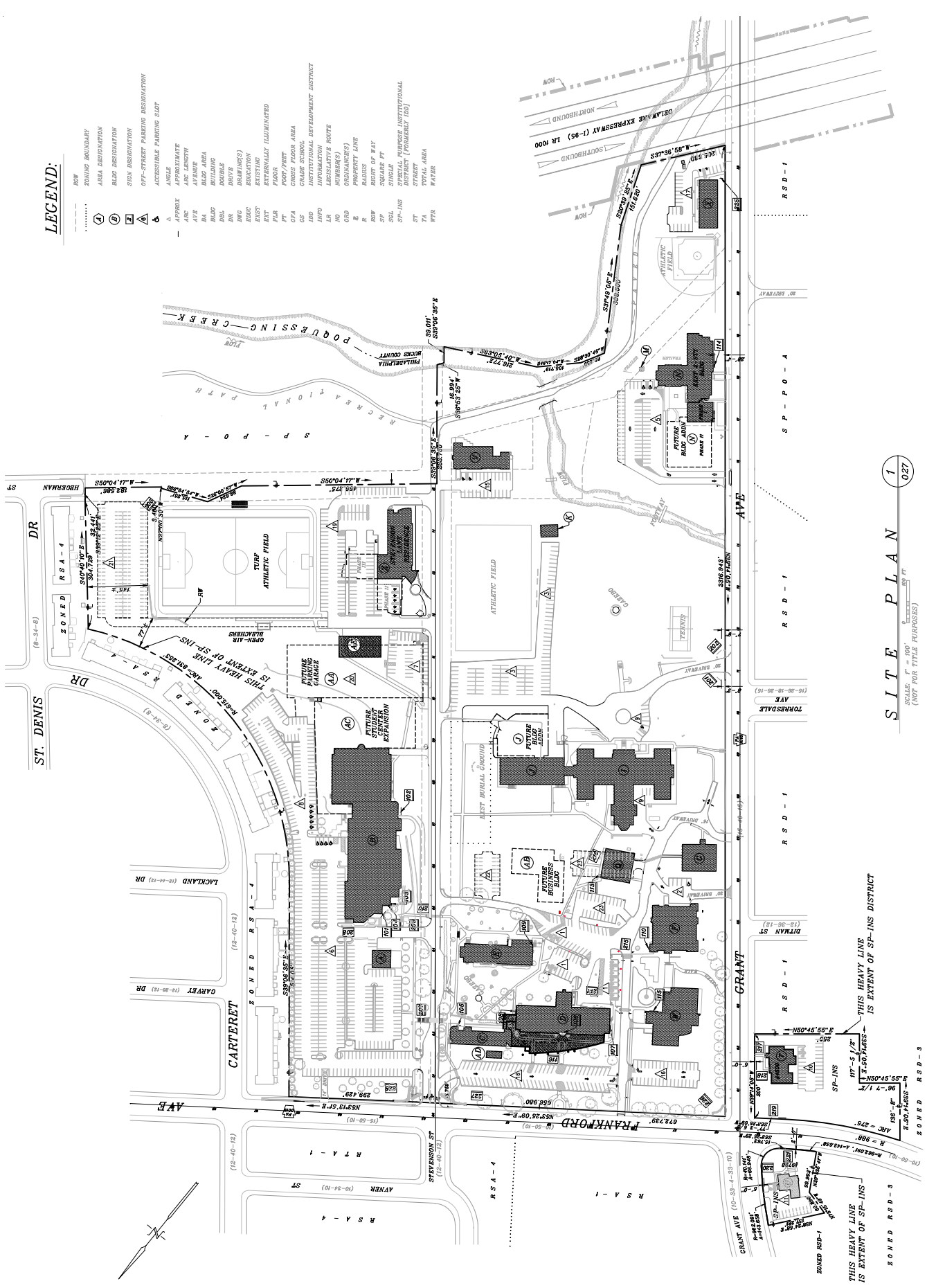


EXHIBIT "A"

EXHIBIT "B"

LEGEND:

- ROW
- ZONING BOUNDARY
- AREA DESIGNATION
- BLDG DESIGNATION
- STN DESIGNATION
- OFF-STREET PARKING DESIGNATION
- ACCESSIBLE PARKING SLAT
- ANGLE
- ARC
- ARC LENGTH
- AVE
- BUILDING
- BUILDING AREA
- DRIVE
- DRAWING(S)
- EDUCATION
- EXISTING
- FLOOR
- FLOOR FINISH
- GAZEBO
- GRASS FLOOR AREA
- GRASS
- INDUSTRIAL
- INVESTMENT
- LEISURE
- LEISURE ROUTE
- NUMBERS
- ORDINANCE(S)
- PLANT LINE
- RADIUS
- RISE OF WAY
- SQUARE FT
- SINGLE
- SP-INS
- STREET
- TOTAL AREA
- WATER



S I T E P L A N 027

SCALE: 1" = 100'
(NOT FOR TITLE PURPOSES)

TANTALA ASSOCIATES, LLC
ENGINEERS & ARCHITECTS
6500 FRANKFORD AVENUE
PHILADELPHIA, PA 19153-3400
215-389-8400
www.tantallala.com

SP-INS Submission:
WELCOME CENTER ADDITION
DRAWING NO
SP-INS-027
8/20/22

THIS HEAVY LINE IS EXTENT OF SP-INS DISTRICT

THIS HEAVY LINE IS EXTENT OF SP-INS

THIS HEAVY LINE IS EXTENT OF SP-INS DISTRICT

THIS HEAVY LINE IS EXTENT OF SP-INS

RECAP OF SP-INS INFO

(AREA OF ENTIRE SP-INS DISTRICT = 2,190,552 SF = 50.288 acres)

	GROSS FLOOR AREA (GFA)	OCCUPIED AREA
EXST (PREVIOUSLY APPROVED)	$\frac{1,010,121 \text{ SF}}{2,190,552 \text{ SF}} = 46.11\%$	$\frac{346,615 \text{ SF}}{2,190,552 \text{ SF}} = 15.82\%$
(AE) ATHLETIC FIELD STRUCTURE (ADDITIONAL AREAS)	$\frac{+2,600 \text{ SF}}{2,190,552 \text{ SF}} = +0.12\%$	$\frac{+2,600 \text{ SF}}{2,190,552 \text{ SF}} = +0.12\%$
(AF) WELCOME CENTER ADDITION	$\frac{+15,000 \text{ SF}}{2,190,552 \text{ SF}} = +0.69\%$	$\frac{+12,000 \text{ SF}}{2,190,552 \text{ SF}} = +0.55\%$
TOTALS	$\frac{1,027,721 \text{ SF}}{2,190,552 \text{ SF}} = 46.92\%$	$\frac{361,215 \text{ SF}}{2,190,552 \text{ SF}} = 16.49\%$
MAX ALLOWED	400%	70%

TANTALA ASSOCIATES, LLC

ENGINEERS & ARCHITECTS

6200 FRANKFORD AVENUE
PHILADELPHIA, PA 19135-3400
215.289.4600

WWW.TANTALA.COM



PLAN OF DEVELOPMENT for & of



Holy Family
UNIVERSITY

SP-INS DISTRICT
9501 FRANKFORD AVENUE
PHILADELPHIA, PA 19114-2009

SP-INS Submission:

WELCOME CENTER ADDITION

Drawing NO

SP-INS-027

20 Dec 22

RECAP OF SP-INS BUILDING INFO

BLDC DESIGNATION	B U I L D I N G S									
	N A M E	U S E				NO OF STORIES	A P P R O X A R E A (SF)			GPA / OCCUPIED
		UNIVERSITY	HIGH SCHOOL	GRADE SCHOOL	PRE-SCHOOL		EXST	FUTURE	TOTAL	
Ⓐ	SHEPHERD'S FOLD	●				2½	4,403 / 1,761	—	4,403 / 1,761	
Ⓑ	STUDENT CENTER	●				2	85,500 / 50,627	—	85,500 / 50,627	
Ⓒ	NURSE EDUC BLDG	●				4	20,760 / 5,190	—	20,760 / 5,190	
Ⓓ	HOLY FAMILY HALL	●				4	60,308 / 15,077	—	60,308 / 15,077	
Ⓔ	ST JOSEPH'S HALL (STUDENT RESIDENCE)	●				4	29,316 / 7,329	—	29,316 / 7,329	
Ⓕ	LIBRARY	●				3	42,177 / 14,059	—	42,177 / 14,059	
Ⓖ	ALPHA HOUSE				●	ONE	5,000 / 5,000	—	5,000 / 5,000	
Ⓗ	SACRED HEART HALL (RELIGIOUS FACULTY)	●				3	4,307 / 1,985	—	4,307 / 1,985	
Ⓙ	PROVINCIAL HOUSE		●			4	95,163 / 25,029	—	95,163 / 25,029	
Ⓝ	NAZARETH ACADEMY HIGH SCHOOL (APPROVED UNDER REV "Q")	EXST BLDG		●		3	23,131 / 10,470	—	23,131 / 10,470	
		PERFORMING ARTS		●		2	—	17,758 / 11,192	17,758 / 11,192	
Ⓐ	CARAGE		●			ONE	1,122 / 1,122	—	1,122 / 1,122	
Ⓜ	STORAGE			●		ONE	100 / 100	—	100 / 100	
Ⓝ	NAZARETH ACADEMY GRADE SCHOOL (APPROVED UNDER REV "F")	EXST BLDG		●		2	25,414 / 12,810	—	25,414 / 12,810	
		ADDN PHASE I		●		2	7,150 / 4,307	—	7,150 / 4,307	
		ADDN PHASE II		●		ONE	—	10,198 / 10,198	10,198 / 10,198	
Ⓞ	AQUINAS HALL	●				ONE	4,709 / 4,709	—	4,709 / 4,709	
Ⓣ	MARIAN HALL	●				2½	9,110 / 4,761	—	9,110 / 4,761	
Ⓤ	3798 FRANKFORD AVE	●				2	3,248 / 2,140	—	3,248 / 2,140	
Ⓥ	DELANEY HALL (RELIGIOUS RESIDENCE)	●				3	19,410 / 6,470	—	19,410 / 6,470	
Ⓦ	EDUCATION BLDG	●				4	59,844 / 14,961	—	59,844 / 14,961	
Ⓧ	GARDEN RESIDENCE BLDG (STUDENT RESIDENCE)	●				3	18,900 / 6,300	—	18,900 / 6,300	
Ⓨ	STEVENSON LANE BLDG (STUDENT RESIDENCE)	PHASE I	●			5	70,000 / 13,000	—	70,000 / 13,000	
		PHASE II	●			5	—	27,500 / 6,000	27,500 / 6,000	
		PHASE III	●			5	—	27,500 / 6,000	27,500 / 6,000	
ⒶⒶ	PARKING GARAGE	●				4	—	200,000 / 50,000	200,000 / 50,000	
ⒶⒷ	BUSINESS SCHOOL	●				4	—	60,000 / 15,000	60,000 / 15,000	
ⒶⒸ	STUDENT CENTER EXPANSION	●				2	—	80,000 / 40,000	80,000 / 40,000	
ⒶⒹ	ELECTRICAL SWITCHGEAR (NOT A BLDG)	●				10' HIGH	— / 603	—	— / 603	
MINOR AMENDMENTS (SINCE MOST PREVIOUS MAJOR AMENDMENT)	SP-INS-023 (16 May13)	Ⓗ	DEMOLITION OF BLDG Ⓗ	●			—	-4,307 / -1,985	—	-4,307 / -1,985
	SP-INS-024 (3 Feb16)	Ⓣ	RENOVATION OF BLDG Ⓣ	●			—	(INCLUDED IN Ⓣ FIGURES ABOVE)		
	SP-INS-025 (11 Mar21)	ⒶⒺ	ATHLETIC FIELD STRUCTURE	●			ONE	—	2,400 / 2,400	2,400 / 2,400
	SP-INS-026 (21 Jun22)	—	STREETScape IMPROVEMENTS (NOT A BLDG)	●			—	—	—	—
THIS AMENDMENT	SP-INS-027 (17 Nov22)	ⒶⒺ	ATHLETIC FIELD STRUCTURE (ADDITIONAL AREAS)	●			ONE	—	+2,600 / +2,600	+2,600 / +2,600
	SP-INS-027 (17 Nov22)	ⒶⓉ	WELCOME CENTER ADDITION	●			2	—	15,000 / 12,000	15,000 / 12,000
TOTALS:							584,765 / 205,825	442,956 / 155,390	1,027,721 / 361,215	

IDD-022 (6 Oct16)

SP-INS-027 (17 Nov22)



TANTALA ASSOCIATES, LLC
ENGINEERS & ARCHITECTS
8200 FRANKFORD AVENUE
PHILADELPHIA, PA 19135-3400
215.289.4600
www.TANTALA.com

PLAN OF DEVELOPMENT for & of



Holy Family UNIVERSITY
SP-INS DISTRICT
9801 FRANKFORD AVENUE
PHILADELPHIA, PA 19114-2009

SP-INS Submission:
WELCOME CENTER ADDITION
Drawing NO
SP-INS-027
20 Dec 22

△ **RECAP OF SP-INS OFF-STREET PARKING** △

DESIGNATION	PARKING SPACES		TOTAL
	EXST	FUTURE	
△1	48 ^{11b}	-	48 ^{11b}
△2	5 ^{1b}	-	5 ^{1b}
△3	90 ^{2b}	-	90 ^{2b}
△5	39 ^{2b}	18 ⁻	57 ^{2b}
△6	324 ^{4b}	-	324 ^{4b}
△7	34 ⁻	-	34 ⁻
△8	106 ^{6b}	-	106 ^{6b}
△9	11 ^{1b}	-	11 ^{1b}
△10	24 ^{2b}	-	24 ^{2b}
△11	6 ^{1b}	8 ⁻	14 ^{1b}
△15	25 ^{2b}	-	25 ^{2b}
△16	103 ⁻	-	103 ⁻
△17	44 ^{2b}	-	44 ^{2b}
△19	131 ^{4b}	-	131 ^{4b}
△20	-	474 ^{9b}	474 ^{9b}
△21	-	116 ^{6b}	116 ^{6b}
△22	-	22 ^{1b}	22 ^{1b}
△23	22 ⁻	32 ⁻	54 ⁻
TOTALS:			
	999 ^{37b}	673 ^{10b}	1,672 ^{47b}

PREVIOUS AMENDMENTS

MINOR AMENDMENTS
 (SINCE MOST PREVIOUS MAJOR AMENDMENT)
 SP-INS-023 (16 May 13)
 SP-INS-024 (3 Feb 16)
 SP-INS-025 (11 Mar 21)
 SP-INS-026 (21 Jun 22)

THIS AMENDMENT

IDD-022 (6 Oct 10)
 SP-INS-027 (17 Nov 22)



TANTALA ASSOCIATES, LLC
 ENGINEERS & ARCHITECTS
 6200 FRANKFORD AVENUE
 PHILADELPHIA, PA 19135-3400
 215.289.4600
 www.tantala.com



PLAN OF DEVELOPMENT for & of
Holy Family UNIVERSITY
 SP-INS DISTRICT
 9801 FRANKFORD AVENUE
 PHILADELPHIA, PA 19114-2009

SP-INS Submission:
WELCOME CENTER ADDITION
 Drawing NO
SP-INS-027
 20 Dec 22

□ RECAP OF FREESTANDING SP-INS ACCESSORY SIGNAGE □

SIGN DESIGNATION	STATUS				NO./FACES		ILLUMINATED		FACE SIZE		APPROX TOTAL AREA (SF±)	HEIGHT (GRADE TO TOP/SIGN) (±)	C O P Y	
	EXIST. REMAIN	PROPOSED	EXIST. TO BE RELOCATED	ONE	TWO	YES	NO	LENGTH	HEIGHT	ONE FACE			OTHER FACE	
201	•			•		•		14'-0"	2'-0"	28	7'-0"	SISTERS OF THE HOLY FAMILY OF NABARETH		
202	•			•		•		14'-0"	2'-0"	28	7'-0"	NABARETH ACADEMY HIGH SCHOOL		
203		•		•		•		16'-0"	3'-0"	ZERO	7'-10"	HOLY FAMILY UNIVERSITY NORTHEAST PHILADELPHIA CAMPUS		
204		•		•		•		16'-0"	3'-0"	ZERO	14'-0"	HOLY FAMILY UNIVERSITY NORTHEAST PHILADELPHIA CAMPUS		
205		•		•		•		16'-0"	3'-0"	ZERO	14'-0"	HOLY FAMILY UNIVERSITY NORTHEAST PHILADELPHIA CAMPUS		
206	•			•		•		18'-0"	8'-0"	144	25'-0"	HOLY FAMILY COLLEGE (SCOREBOARD FOR ATHLETIC FIELD)		
207	•				•		•	3'-7"	4'-0"	29	5'-9"	UNIVERSITY CENTER STUDENT PARKING	UNIVERSITY CENTER ALPHA HOUSE AQUINAS HALL HOLY FAMILY HALL LIBRARY LOURDES HALL MARIAN HALL NURSE EDUCATION ST. JOSEPH'S HALL	
208	•				•		•	2'-7"	3'-0"	16	5'-5"	UNIVERSITY CENTER MAIN ENTRANCE, RECEIVING	UNIVERSITY CENTER MAIN ENTRANCE	
209	•				•		•	3'-7"	4'-6"	32	6'-11"	UNIVERSITY CENTER PARKING	UNIVERSITY CENTER MAIN ENTRANCE ALPHA HOUSE AQUINAS HALL LIBRARY LOURDES HALL MARIAN HALL ST. JOSEPH'S HALL HOLY FAMILY HALL NURSE EDUCATION ATHLETIC FIELDS PARKING	
210	•				•		•	2'-7"	3'-0"	16	5'-5"	PARKING ENTRANCE ONLY	ATHLETIC FIELDS PARKING	
211	•				•		•	3'-0"	1'-0"	3	6'-0"	UNIVERSITY CENTER		
212	•				•		•	3'-3"	4'-0"	28	6'-0"	AQUINAS HALL LOURDES HALL NURSE EDUCATION HOLY FAMILY HALL	AQUINAS HALL LOURDES HALL UNIVERSITY CENTER NURSE EDUCATION HOLY FAMILY HALL	
213	•				•		•	3'-0"	1'-0"	3	6'-3"	UNIVERSITY CENTER		
214	•				•		•	1'-6"	1'-6"	3	6'-0"	HOLY FAMILY HALL		
215	•				•		•	3'-7"	4'-0"	29	6'-0"	LIBRARY MARIAN HALL ALPHA HOUSE AQUINAS HALL UNIVERSITY CENTER HOLY FAMILY HALL NURSE EDUCATION PARKING ST. JOSEPH'S HALL	LIBRARY MARIAN HALL AQUINAS HALL UNIVERSITY CENTER HOLY FAMILY HALL LOURDES HALL NURSE EDUCATION PARKING ST. JOSEPH'S HALL	
216	•				•		•	3'-0"	1'-0"	3	5'-4"	AQUINAS HALL		
217	•				•		•	3'-0"	1'-0"	3	6'-0"	HOLY FAMILY UNIVERSITY MARIAN HALL		
218	•				•		•	5'-0"	3'-0"	30	6'-0"	HOLY FAMILY UNIVERSITY MARIAN HALL	HOLY FAMILY UNIVERSITY MARIAN HALL	
219	•				•		•	5'-0"	3'-0"	30	6'-0"	HOLY FAMILY UNIVERSITY MARIAN HALL	HOLY FAMILY UNIVERSITY MARIAN HALL	
220	•				•		•	5'-0"	3'-0"	30	6'-0"	HOLY FAMILY UNIVERSITY UNDERGRADUATE ADMISSIONS CENTER	HOLY FAMILY UNIVERSITY UNDERGRADUATE ADMISSIONS CENTER	
221	•				•		•	5'-0"	3'-0"	30	6'-0"	HOLY FAMILY UNIVERSITY UNDERGRADUATE ADMISSIONS CENTER	HOLY FAMILY UNIVERSITY UNDERGRADUATE ADMISSIONS CENTER	
222		•			•		•	7'-7"	6'-1"	ZERO	17'-0"	HOLY FAMILY UNIVERSITY NORTHEAST PHILADELPHIA CAMPUS ENTRANCE, PARKING, CAMPUS CENTER	HOLY FAMILY UNIVERSITY NORTHEAST PHILADELPHIA CAMPUS ENTRANCE, PARKING, CAMPUS CENTER	
								7'-7"	3'-0"			(ELECTRONIC MESSAGE BOARD)	(ELECTRONIC MESSAGE BOARD)	
225	•				•		•	3'-4"	3'-0"	10	6'-0"	HOLY FAMILY UNIVERSITY GARDEN RESIDENCE	HOLY FAMILY UNIVERSITY GARDEN RESIDENCE	
226	•				•		•	16'-0"	3'-0"	48	6'-0"	HOLY FAMILY UNIVERSITY PHILADELPHIA		
227	•				•		•	16'-0"	3'-0"	48	6'-0"	HOLY FAMILY UNIVERSITY		
228	•				•		•	16'-0"	3'-0"	48	6'-0"	HOLY FAMILY UNIVERSITY		
TOTALS	19	3	4							639				



TANTALA ASSOCIATES, LLC
ENGINEERS & ARCHITECTS
6200 FRANKFORD AVENUE
PHILADELPHIA, PA 19135-3400
215.289.4600
www.TANTALA.com




Holy Family
UNIVERSITY
SP-INS DISTRICT
9801 FRANKFORD AVENUE
PHILADELPHIA, PA 19114-2009

SP-INS Submission:
WELCOME CENTER ADDITION
Drawing No
SP-INS-027
20Dec22


RECAP OF WALL-MOUNTED SP-INS ACCESSORY SIGNAGE

SIGN DESIGNATION	STATUS		BLDGC DESIGNATION	ILLUMINATED		FACE SIZE		APPROX TOTAL AREA (SF±)	HEIGHT TO GRADE TO TOP/SIGN (±)	C O P Y
	EXST TO REMAIN	PROPOSED		EXST TO BE REMOVED	YES	NO	LENGTH			
101	•		(B)		•	12'-6"	1'-0"	13	11'-6"	CAMPUS CENTER
102	•		(B)		•	12'-6"	1'-0"	13	11'-6"	UNIVERSITY CENTER
103	•		(B)		•	3'-4"	8"	3	5'-6"	TIGER CAFE
104	•		(B)		•	3'-4"	8"	3	5'-6"	TIGER CAFE
105	•		(C)		•	10'-0"	1'-10"	19	12'-4"	NURSE EDUCATION BUILDING
106	•		(D)		•	11'-0"	4'-0"	44	45'-0"	HOLY FAMILY UNIVERSITY
107	•		(D)		•	10'-10"	6"	6	11'-0"	HOLY FAMILY HALL
108	•		(D)		•	9'-8"	8"	7	14'-4"	HOLY FAMILY HALL
109	•		(E)		•	4'-4"	1'-6"	7	8'-2"	ST. JOSEPH HALL
110	•		(F)		•	3'-0"	6"	2	13'-0"	LIBRARY
113	•		(Q)		•	4'-4"	6"	3	12'-6"	AQUINAS HALL
114	•		(N)		•	7'-0"	1'-4"	10	9'-0"	NAZARETH ACADEMY GRADE SCHOOL
115	•		(P)		•	7'-0"	1'-4"	10	10'-0"	EDUCATION BUILDING
116	•		(A)		•	40'-0"	2'-0"	80	85'-0"	HOLY FAMILY UNIVERSITY WELCOME CENTER
TOTALS	14							220		



TANTALA ASSOCIATES, LLC
ENGINEERS & ARCHITECTS
6200 FRANKFORD AVENUE
PHILADELPHIA, PA 19135-3400
215.289.4600
WWW.TANTALA.COM

PLAN OF DEVELOPMENT for & of



Holy Family UNIVERSITY
SP-INS DISTRICT
9601 FRANKFORD AVENUE
PHILADELPHIA, PA 19114-2009

SP-INS Submission:
WELCOME CENTER ADDITION
Drawing NO
SP-INS-027
20 Dec 22