

City of Philadelphia



(Bill No. 090408)

AN ORDINANCE

To amend the Philadelphia Zoning Maps by changing the zoning designations of certain areas of land located within an area generally bounded by a line located approximately 220 feet north of Cumberland Street, the Delaware River, a line located approximately 328 feet south of Berks Street, Beach Street, Richmond Street, Schirra Drive, Beach Street and Cumberland Street.

THE COUNCIL OF THE CITY OF PHILADELPHIA HEREBY ORDAINS:

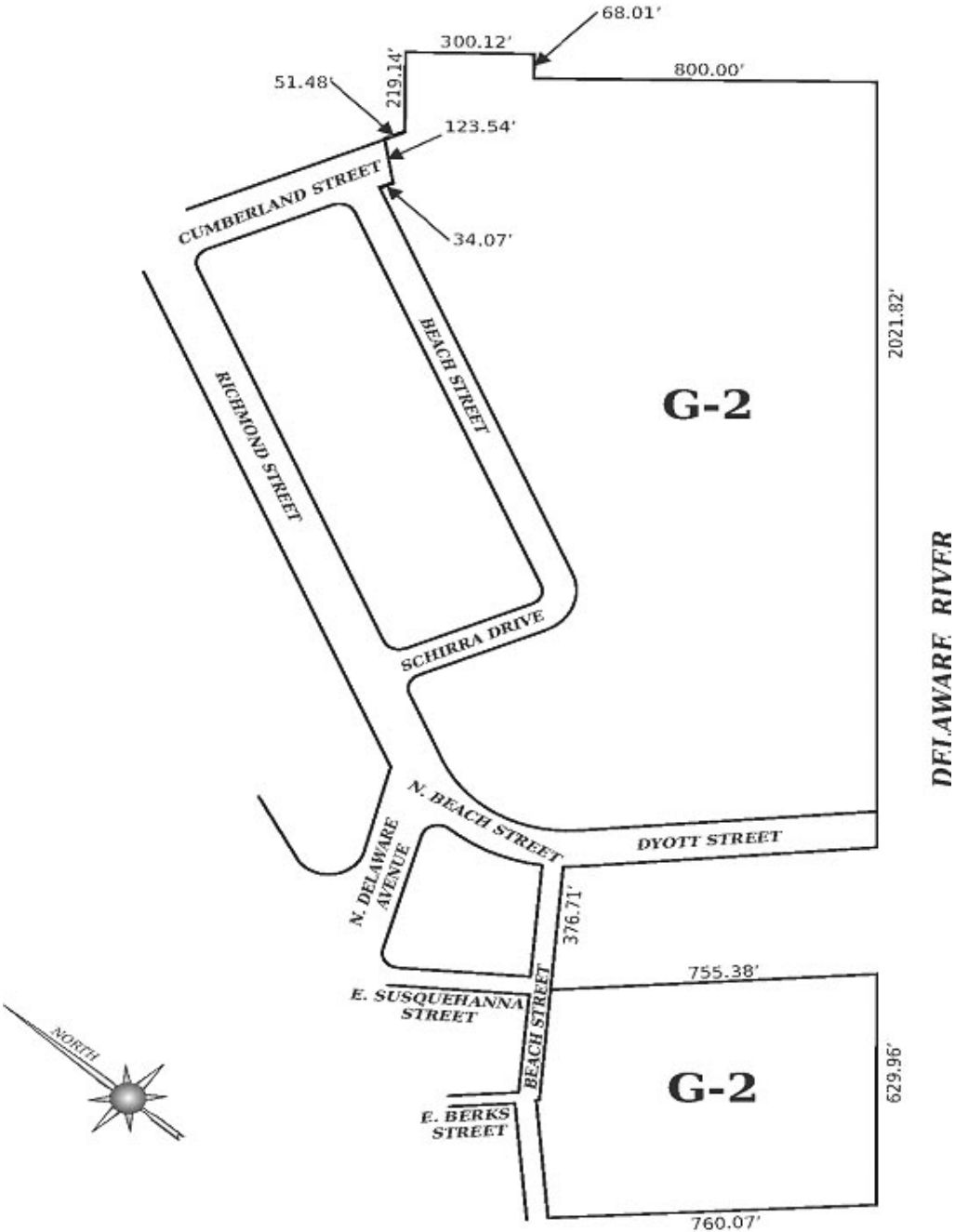
SECTION 1. Pursuant to Section 14-103 of The Philadelphia Code, The Philadelphia Zoning Maps are hereby amended by changing the zoning designations of certain areas of land within the area generally bounded by a line located approximately 220 feet north of Cumberland Street, the Delaware River, a line located approximately 328 feet south of Berks Street, Beach Street, Richmond Street, Schirra Drive, Beach Street and Cumberland Street, from the existing zoning designations indicated on Map "A" set forth below to the zoning designations indicated on Map "B" set forth below.

SECTION 2. This Ordinance shall become effective immediately.

City of Philadelphia

BILL NO. 090408 continued

Certified Copy

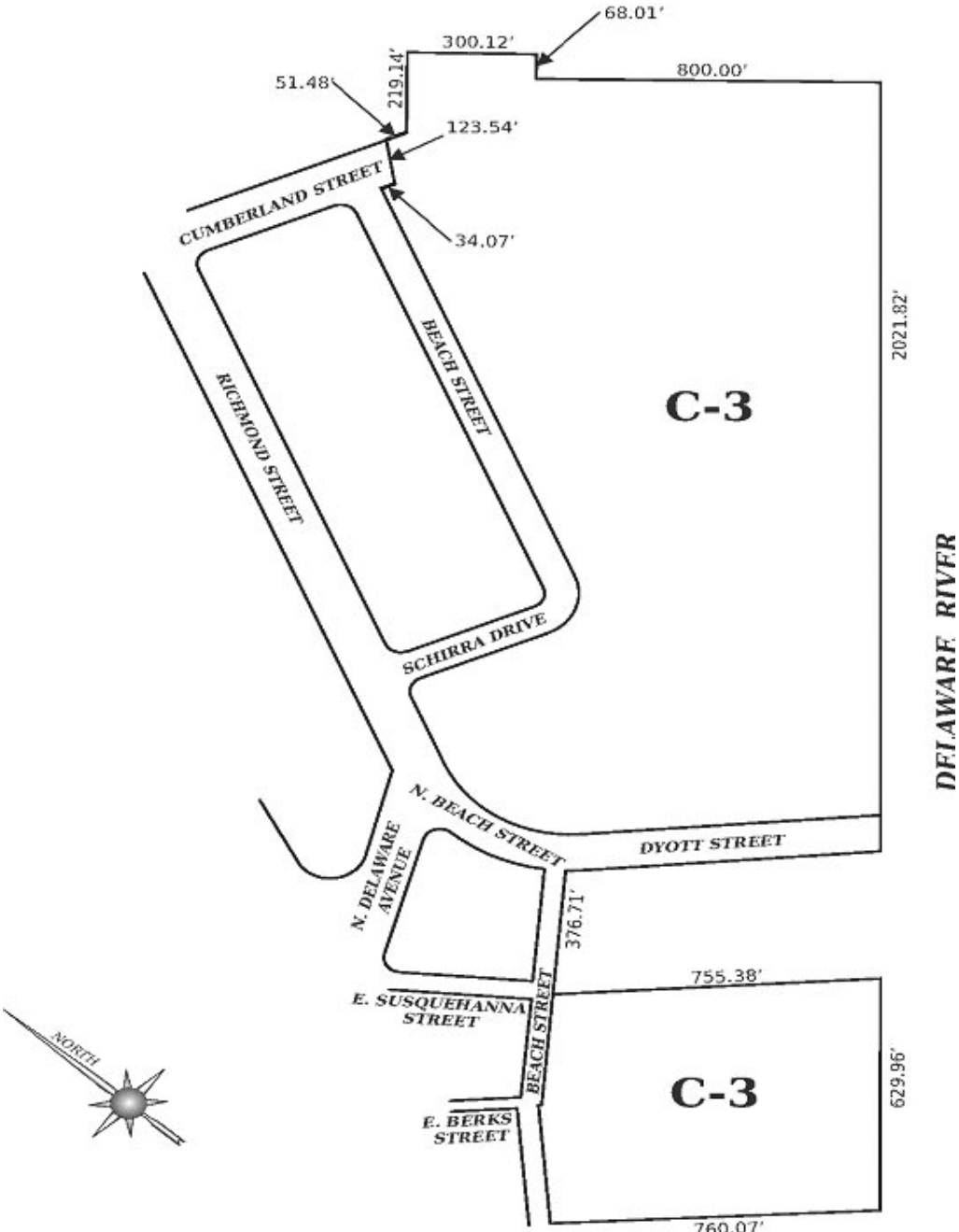


MAP "A" EXISTING ZONING

City of Philadelphia

BILL NO. 090408 continued

Certified Copy



MAP "B" PROPOSED ZONING

City of Philadelphia

BILL NO. 090408 continued

Certified Copy

CERTIFICATION: This is a true and correct copy of the original Bill, Passed by the City Council on September 17, 2009. The Bill was Signed by the Mayor on September 23, 2009.



Michael A. Decker
Chief Clerk of the City Council