

City of Philadelphia



(Bill No. 100750-A)

AN ORDINANCE

To amend the Institutional Development District Master Plan of Holy Family University, located at 4500 Grant Avenue, by allowing for the construction of a new administrative building.

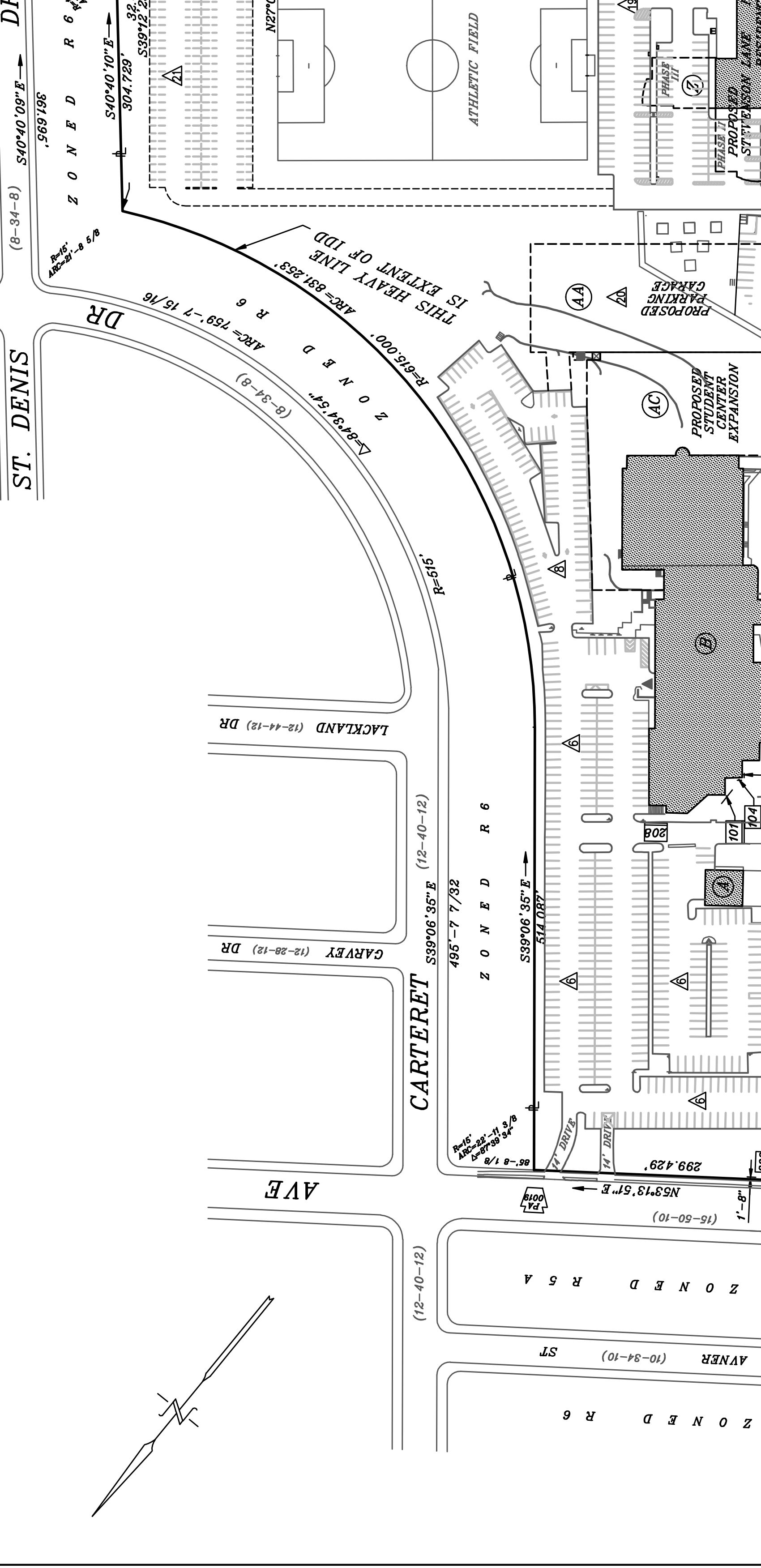
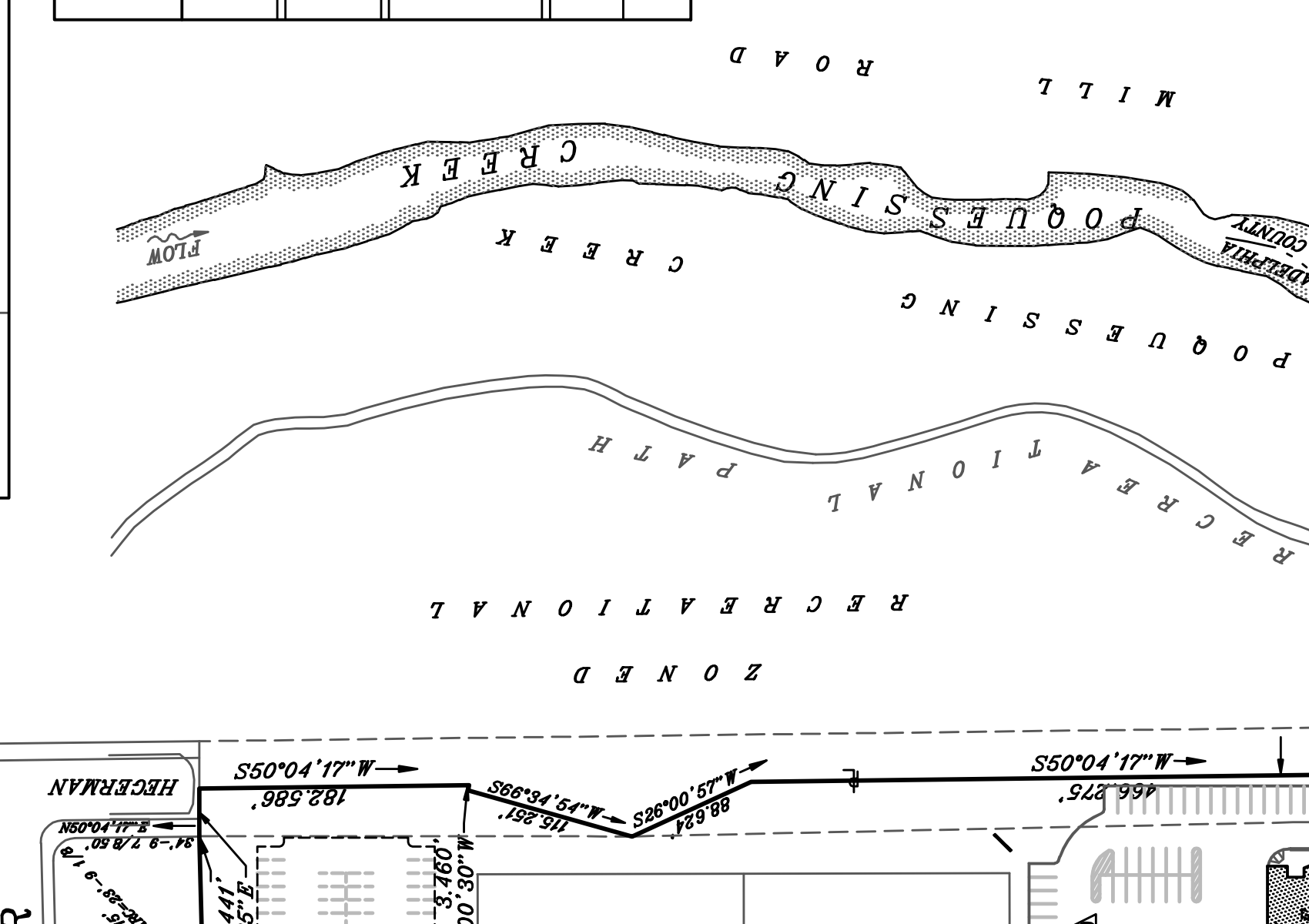
THE COUNCIL OF THE CITY OF PHILADELPHIA HEREBY ORDAINS:

SECTION 1. Pursuant to Section 14-1107(c) of The Philadelphia Code, the Institutional Development District Master Plan of Holy Family University is hereby amended by allowing for the construction of a new building to be used for administrative purposes, called Marian Hall, as set forth in Exhibit "A", which is on file with the Chief Clerk's Office, and a copy of which is attached hereto for reference.

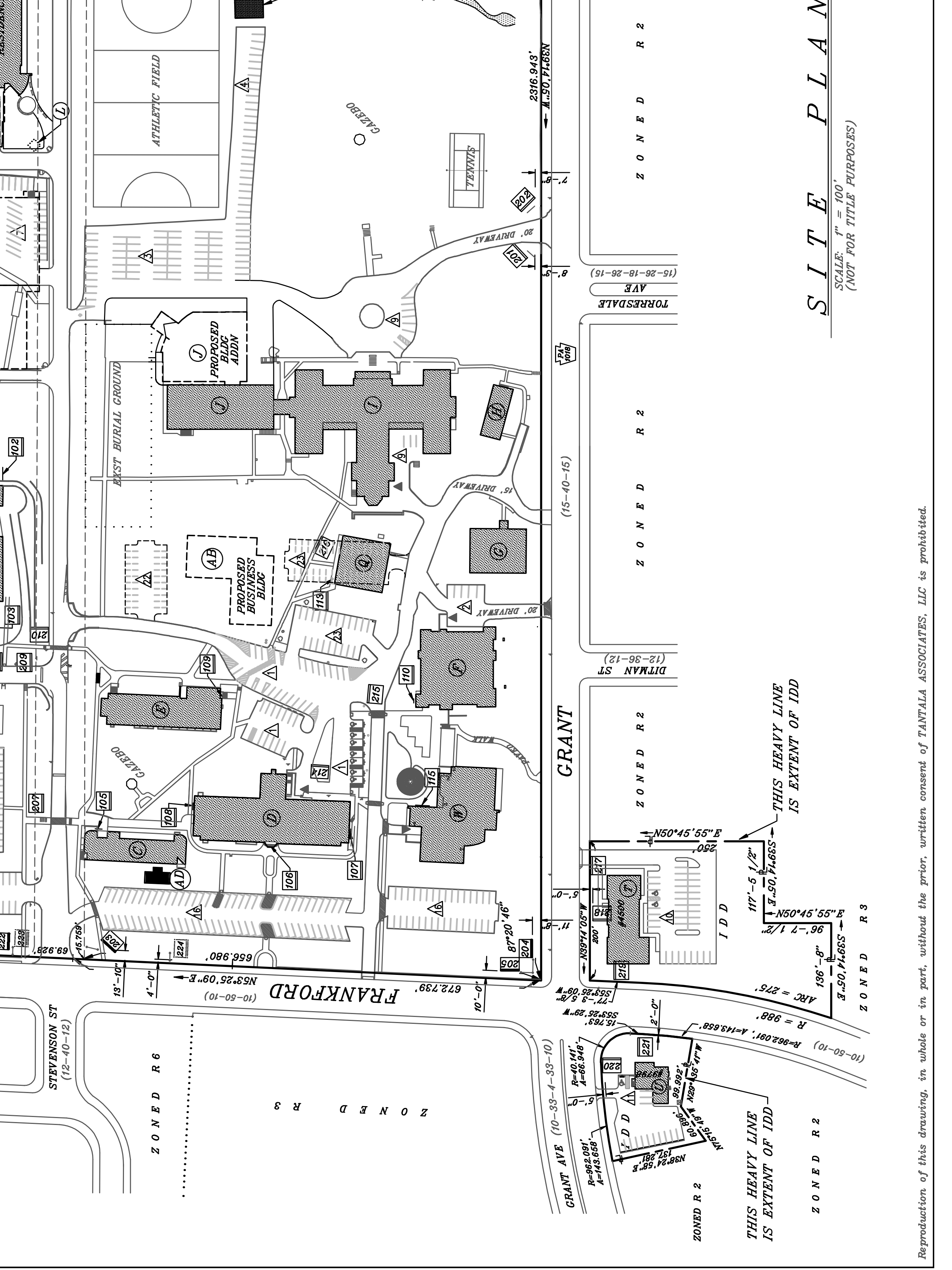
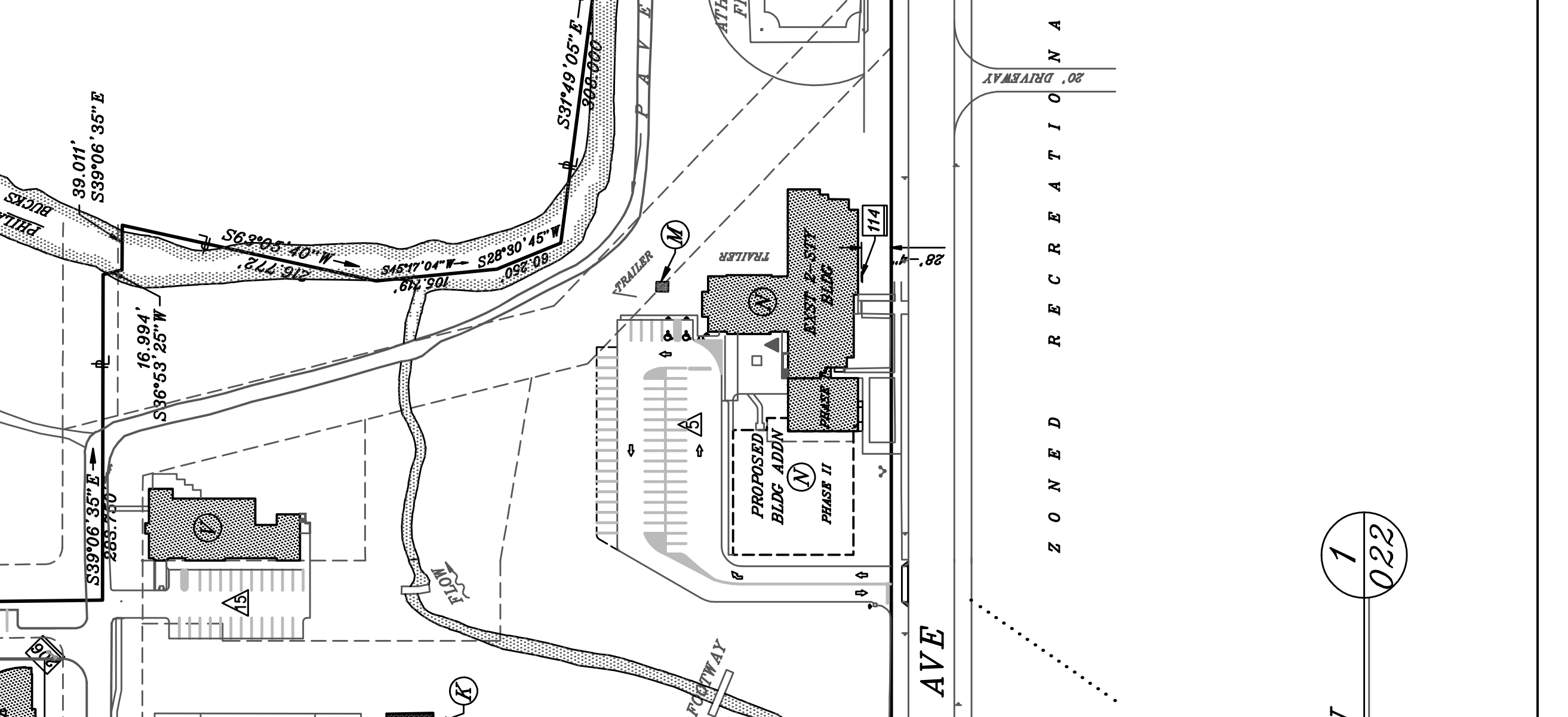
SECTION 2. This Ordinance shall take effect immediately.

SIGN DESIGNATION	NO. OF STORIES	APPROX. AREA (SF)	U.S.E.	NAME	BLDG. DESIGNATION	NO. OF SLOTS		RECAP OF OFF-STREET IDD PARKING		RECAP OF BUILDING INFO		RECAP OF FREESTANDING IDD ACCESSORY SIGNAGE		
						ACCESSIBLE	OTHER	TOTAL	DESIGNATION	NAME	U.S.E.	APPROX. AREA (SF)	NO. OF STORIES	NO. OF PHICES
101	2	4,003	UNIVERSITY	SHEPHERD'S WOOD	UNIVERSITY	37	1	38	14'-0"	28'	7'-0"	28'	7'-0"	OTHER FACE
102	2	65,500	UNIVERSITY	STUDENT CENTER	UNIVERSITY	4	5	9	14'-0"	28'	7'-0"	28'	7'-0"	OTHER FACE
103	4	20,760	UNIVERSITY	NUSE ERIC BLDG	UNIVERSITY	68	30	98	16'-0"	32'	3'-0"	32'	3'-0"	OTHER FACE
104	4	15,077	UNIVERSITY	HOLY FAMILY HALL	UNIVERSITY	55	57	112	16'-0"	32'	3'-0"	32'	3'-0"	OTHER FACE
105	4	29,396	UNIVERSITY	ST. JOSEPH'S HALL	UNIVERSITY	4	824	828	14'-0"	28'	7'-0"	28'	7'-0"	OTHER FACE
106	3	14,009	UNIVERSITY	LIBRARY	UNIVERSITY	34	34	68	14'-0"	28'	7'-0"	28'	7'-0"	OTHER FACE
107	1	5,000	PRO-SCHOOL	ALPHA HOUSE	PRO-SCHOOL	107	107	214	15'-0"	30'	12'-0"	30'	12'-0"	OTHER FACE
108	1	4,307	RECREATION	SACRED HEART HALL	RECREATION	11	11	22	3'-0"	6'-0"	4'-0"	6'-0"	4'-0"	OTHER FACE
109	1	56,063	HIGH SCHOOL	PROFESSOR HALL	HIGH SCHOOL	37	39	76	2'-0"	4'-0"	3'-0"	4'-0"	3'-0"	OTHER FACE
110	1	23,131	HIGH SCHOOL	PROFESSOR HALL	HIGH SCHOOL	13	14	27	2'-0"	4'-0"	3'-0"	4'-0"	3'-0"	OTHER FACE
111	2	17,758	HIGH SCHOOL	PERFORMING ARTS (PROPOSED)	HIGH SCHOOL	23	25	48	2'-0"	4'-0"	3'-0"	4'-0"	3'-0"	OTHER FACE
112	2	11,122	HIGH SCHOOL	PERFORMING ARTS (PROPOSED)	HIGH SCHOOL	103	103	206	2'-0"	4'-0"	3'-0"	4'-0"	3'-0"	OTHER FACE
113	2	144	UNIVERSITY	ANNOUNCING BOOTH	UNIVERSITY	42	44	86	2'-0"	4'-0"	3'-0"	4'-0"	3'-0"	OTHER FACE
114	1	100	UNIVERSITY	GRADE SCHOOL	UNIVERSITY	127	131	258	3'-0"	6'-0"	4'-0"	6'-0"	4'-0"	OTHER FACE
115	2	25,114	UNIVERSITY	MEANATH ACADEMY	UNIVERSITY	114	116	230	3'-0"	6'-0"	4'-0"	6'-0"	4'-0"	OTHER FACE
116	2	17,846	UNIVERSITY	MEANATH ACADEMY	UNIVERSITY	68	62	130	3'-0"	6'-0"	4'-0"	6'-0"	4'-0"	OTHER FACE
117	1	10,198	UNIVERSITY	MEANATH ACADEMY	UNIVERSITY	9	474	483	3'-0"	6'-0"	4'-0"	6'-0"	4'-0"	OTHER FACE
118	1	4,709	UNIVERSITY	ADORNAS HALL	UNIVERSITY	111	116	227	3'-0"	6'-0"	4'-0"	6'-0"	4'-0"	OTHER FACE
119	2	12,740	UNIVERSITY	PROPOSED MARIAN HALL	UNIVERSITY	21	22	43	3'-0"	6'-0"	4'-0"	6'-0"	4'-0"	OTHER FACE
120	3	3,248	UNIVERSITY	5758 FRANKFORD AVE	UNIVERSITY	3	70	73	3'-0"	6'-0"	4'-0"	6'-0"	4'-0"	OTHER FACE
121	3	19,410	UNIVERSITY	DEANRY HALL	UNIVERSITY	1	1	2	3'-0"	6'-0"	4'-0"	6'-0"	4'-0"	OTHER FACE
122	4	59,844	UNIVERSITY	EVANGELION BLDG	UNIVERSITY	1	1	2	3'-0"	6'-0"	4'-0"	6'-0"	4'-0"	OTHER FACE
123	4	16,900	UNIVERSITY	GARDEN RESIDENCE BLDG	UNIVERSITY	1	1	2	3'-0"	6'-0"	4'-0"	6'-0"	4'-0"	OTHER FACE
124	6	70,000	UNIVERSITY	STEVENS LANE RESIDENCE BLDG	UNIVERSITY	1	1	2	3'-0"	6'-0"	4'-0"	6'-0"	4'-0"	OTHER FACE
125	6	27,600	UNIVERSITY	PARKING GARAGE	UNIVERSITY	1	1	2	3'-0"	6'-0"	4'-0"	6'-0"	4'-0"	OTHER FACE
126	4	200,000	UNIVERSITY	BUSINESS SCHOOL	UNIVERSITY	1	1	2	3'-0"	6'-0"	4'-0"	6'-0"	4'-0"	OTHER FACE
127	4	15,000	UNIVERSITY	STUDENT CENTER EXPANSION	UNIVERSITY	1	1	2	3'-0"	6'-0"	4'-0"	6'-0"	4'-0"	OTHER FACE
128	2	40,000	UNIVERSITY	STUDENT CENTER EXPANSION	UNIVERSITY	1	1	2	3'-0"	6'-0"	4'-0"	6'-0"	4'-0"	OTHER FACE
129	107	347,853	UNIVERSITY	ELABORAL SUPERVISOR	UNIVERSITY	66	1,624	1,690	3'-0"	6'-0"	4'-0"	6'-0"	4'-0"	OTHER FACE
TOTALS						1,617	1,617	3,234						

RECAP OF IDD INFO	
EST	344,854 SF = 16.72%
PROPOSED	8,044 SF = -0.15%
TOTAL	352,898 SF = 16.57%
MAX ALLOWED	400K



STATION	BLDG DESIGNATION	STATES	FACE SIZE	APPROX. TOTAL TOPOGRAPHY (SQ. FT.)	
101	UNIVERSITY	1	14'-0" x 28'	28'	
102	UNIVERSITY	1	14'-0" x 28'	28'	
103	UNIVERSITY	1	16'-0" x 32'	48'	
104	UNIVERSITY	1	16'-0" x 32'	48'	
105	UNIVERSITY	1	14'-0" x 28'	28'	
106	UNIVERSITY	1	15'-0" x 30'	30'	
107	UNIVERSITY	1	3'-0" x 6'-0"	6'	
108	UNIVERSITY	1	3'-0" x 6'-0"	6'	
109	UNIVERSITY	1	2'-0" x 4'-0"	4'	
110	UNIVERSITY	1	2'-0" x 4'-0"	4'	
111	UNIVERSITY	1	2'-0" x 4'-0"	4'	
112	UNIVERSITY	1	2'-0" x 4'-0"	4'	
113	UNIVERSITY	1	2'-0" x 4'-0"	4'	
114	UNIVERSITY	1	3'-0" x 6'-0"	6'	
115	UNIVERSITY	1	3'-0" x 6'-0"	6'	
116	UNIVERSITY	1	3'-0" x 6'-0"	6'	
117	UNIVERSITY	1	3'-0" x 6'-0"	6'	
118	UNIVERSITY	1	3'-0" x 6'-0"	6'	
119	UNIVERSITY	1	3'-0" x 6'-0"	6'	
120	UNIVERSITY	1	3'-0" x 6'-0"	6'	
121	UNIVERSITY	1	3'-0" x 6'-0"	6'	
122	UNIVERSITY	1	3'-0" x 6'-0"	6'	
123	UNIVERSITY	1	3'-0" x 6'-0"	6'	
124	UNIVERSITY	1	3'-0" x 6'-0"	6'	
125	UNIVERSITY	1	3'-0" x 6'-0"	6'	
126	UNIVERSITY	1	3'-0" x 6'-0"	6'	
127	UNIVERSITY	1	3'-0" x 6'-0"	6'	
128	UNIVERSITY	1	3'-0" x 6'-0"	6'	
129	UNIVERSITY	1	3'-0" x 6'-0"	6'	
TOTALS		17	6	2	1008



RECAP OF FREESTANDING IDD ACCESSORY SIGNAGE

LEGEND:

- 1. Do not scale DWG.
- 2. APPROX BLDG areas do not include any reduction for ornamental towers, church gables, mechanical towers, or FLR areas which is below ground level and is not used for residential purposes.
- 3. All Property within the IDD Classification is owned by Holy Family University, PA Corporation, and/or The Sisters of the Holy Family of Nazareth, a
- 4. All property distances are Philadelphia District Standard.
- 5. A portion of the IDD is within the 100-year flood plain. Location lines are shown for reference. The 100-year flood plain appears that a portion of the property is within the 100-year flood plain.
- 6. The "Holy Family IDIT" includes the following:
 - Nazareth Academy Grade School,
 - Nazareth Academy High School,
 - Immaculate Conception Provincial Headquarters.
- 7. This DWG is a revision of our DWG NO IDI-021 dated 27/06/07.

NOTES:

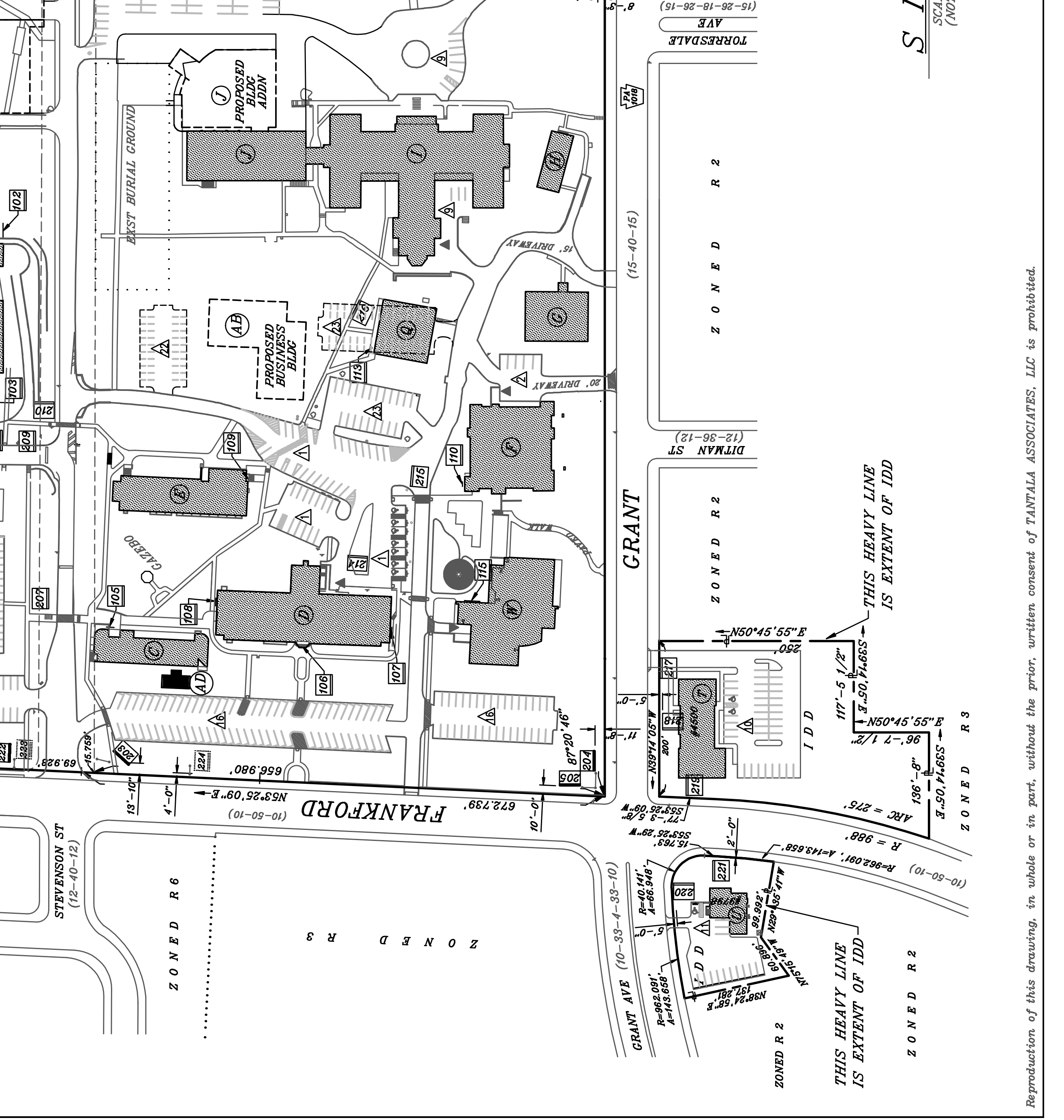
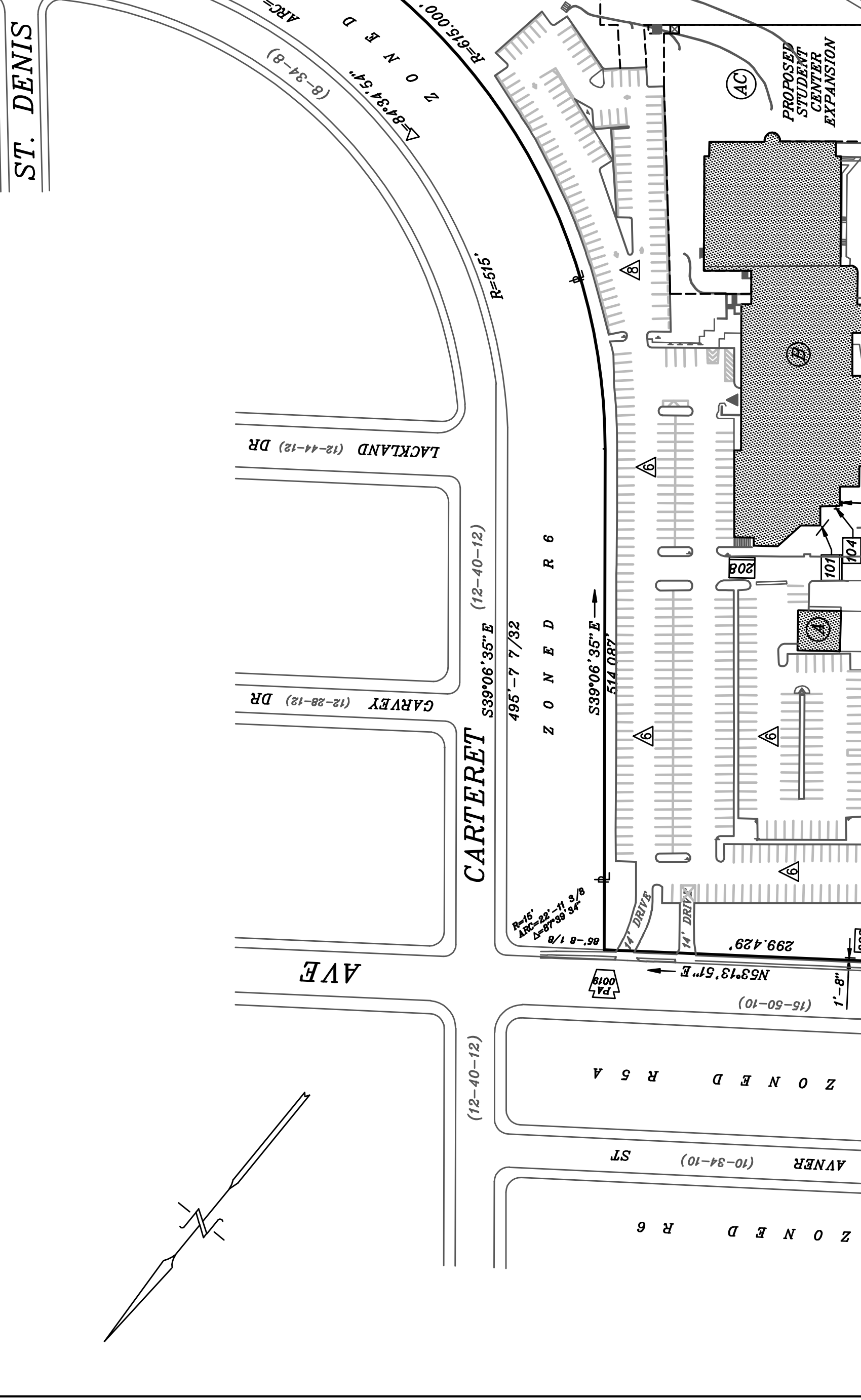
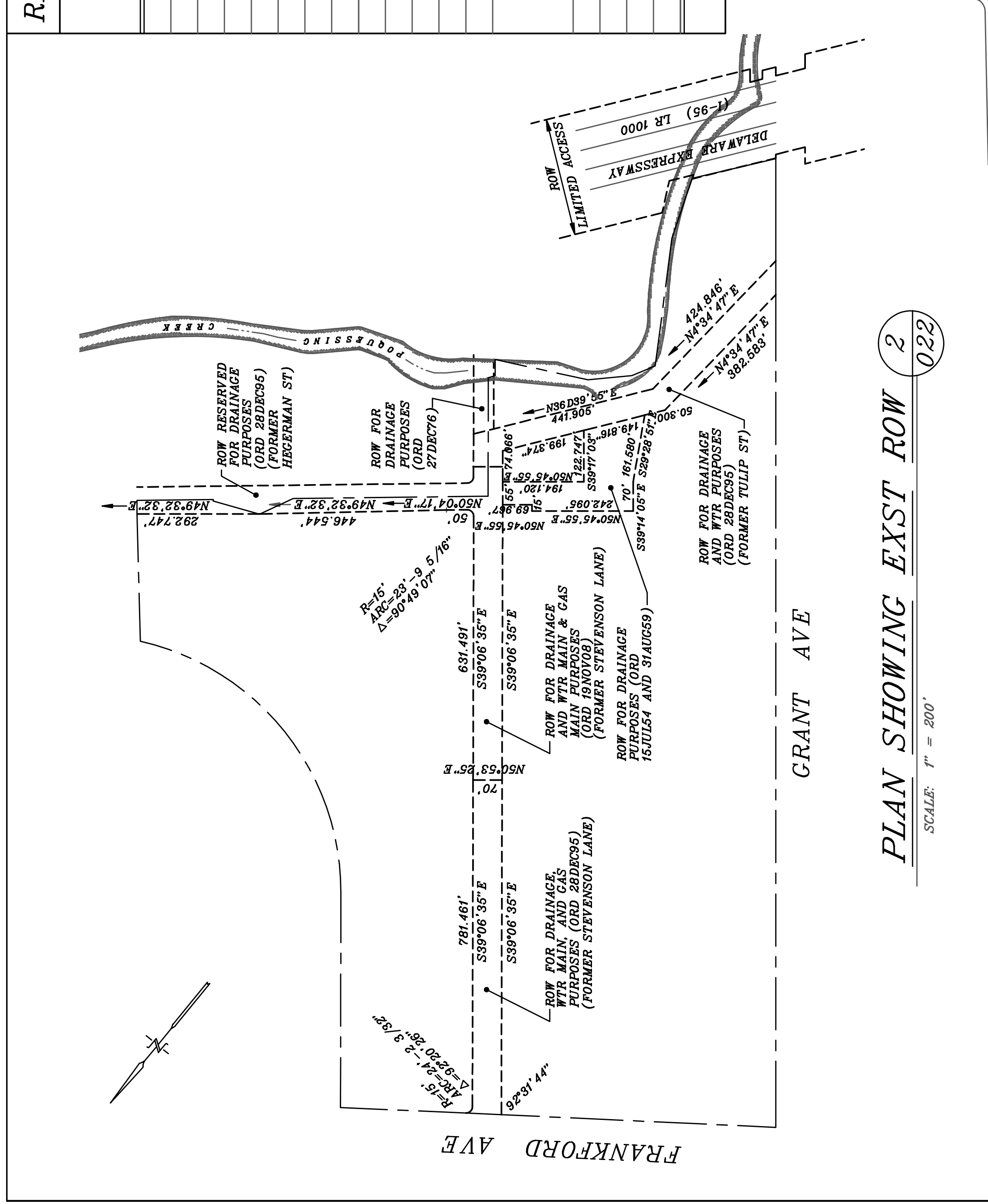
Scale: AS NOTED
 Drawn By: J.P.S.
 Checked by: A.M.P.
 Date: 8/04/10
 Drawing No: 76038.007
 IDD Submission: HOLY FAMILY UNIVERSITY PROPOSED DEVELOPMENT BUILDING
 Drawing No: IDD-022

TANTALA ASSOCIATES, LLC
 CONSULTING ENGINEERS
 PHILADELPHIA, PA 19104-2817
 215.289.4000
 www.TANTALA.com

PLAN OF DEVELOPMENT for & of
 HOLY FAMILY DD
 8001 FRANKFORD AVENUE
 PHILADELPHIA, PA 19114-2009

PETER J. TANTALA, P.E.
 PROFESSIONAL ENGINEER
 PA NO 066041-E
 NJ NO 08044419

ALBERT M. TANTALA, P.E.
 PROFESSIONAL ENGINEER
 PA NO 14065-E
 NJ NO 06017
 NY NO 6504
 VA NO 18053
 NY NO 76018



City of Philadelphia

BILL NO. 100750-A continued

Certified Copy

City of Philadelphia

BILL NO. 100750-A continued

Certified Copy

CERTIFICATION: This is a true and correct copy of the original Bill, Passed by the City Council on February 17, 2011. The Bill was Signed by the Mayor on February 25, 2011.



Michael A. Decker
Chief Clerk of the City Council