

# City of Philadelphia



(Bill No. 220517-AA)

## AN ORDINANCE

Authorizing the installation, ownership, and maintenance of various encroachments in the vicinity of 1 Convention Avenue, Philadelphia, PA 19104, under certain terms and conditions.

*THE COUNCIL OF THE CITY OF PHILADELPHIA HEREBY ORDAINS:*

SECTION 1. Permission is hereby granted to the Trustees of the University of Pennsylvania (“Owner”) to install, own, and maintain encroachments in the vicinity of 1 Convention Avenue (the “Encroachment”) as follows:

Property: 1 Convention Avenue, Philadelphia, PA 19104; 4 Convention Avenue, Philadelphia, PA, 19104; 3400 Spruce Street, Philadelphia, PA, 19104; 3400 Civic Center Boulevard, Philadelphia, PA 19104; 3200 South Street, Philadelphia, PA, 19104; and 3220-60 South Street, Philadelphia PA, 19104 (the “Properties”)

Encroachment Description:

Part A - Proposed Pedestrian Bridges: Proposed pedestrian bridges located along the west Right-of-Way line of South 34<sup>th</sup> Street and the east Right of Way line of Health Sciences Drive, in two (2) parts.

Part 1

A proposed pedestrian bridge located from a point approximately one hundred and ninety-nine feet (199’-0”) north of the Convention Avenue north curb line to a point approximately thirty-seven feet five inches (37’-5”) farther north and encroaching upon the west footway of South 34th Street approximately three feet six inches (3’-6”) toward the east, as depicted as “Encroachment 3 Proposed Columns (For Bridge 1)” on the proposed plan attached hereto as Fig. 3.

Part 2

A proposed pedestrian bridge located from a point on the east footway of Health Sciences Drive, approximately two hundred and sixty-five feet (265’-0”) north of the Convention Avenue north curb line at its intersection with Health Sciences Drive, to a point approximately fifty-nine feet five inches (59’-5”) farther north, and from the building line to approximately five feet seven inches (5’-7”) toward the west, as depicted as “Encroachment 7 Proposed Elevated Pedestrian Walkway (Bridge 2)” on the proposed plan attached hereto as Fig. 3.

Clear passable sidewalk, with a minimum width of fifteen feet (15’-0”) on South 34th Street and a minimum width of nine feet (9’-0”) on Health Sciences Drive, is to remain after installation.

# City of Philadelphia

BILL NO. 220517-AA continued

Certified Copy

Part B - Various Other Encroachments: Various proposed encroachments, located along the east Right-of-Way line of South 33<sup>rd</sup> Street, along the north Right-of-Way line of Convention Avenue, and along the west Right-of-Way line of Health Sciences Drive, in twenty-two (22) parts.

## Part 1 (Building Overhang 1)

A proposed building overhang, located along the east Right-of-Way line of South 33rd Street, from a point approximately one hundred and twelve feet (112'-0") north of the Convention Avenue north curb line to a point approximately eleven feet (11'-0") farther north and encroaching upon the east footway of South 33rd Street approximately four inches (0'-4") toward the west, with a lower edge not less than fifty-seven feet (57'-0") above finished grade, as depicted as "Building Encroachment 1" on the proposed plan attached hereto as Fig. 6.

## Part 2 (Building Overhang 2)

A proposed building overhang, located along the west Right-of-Way line of Health Sciences Drive, from a point approximately two hundred and thirty-two feet (232'-0") north of the Convention Avenue north curb line to a point approximately fifteen feet (15'-0") farther north and encroaching upon the west footway of Health Sciences Drive approximately seven inches (0'-7") toward the east, with a lower edge not less than sixty-six feet (66'-0") above finished grade, as depicted as "Building Encroachment 2" on the proposed plan attached hereto as Fig. 6.

## Part 3 (Retaining Wall 1)

A proposed set of retaining walls, located along the east Right-of-Way line of South 33rd Street, from a point approximately two hundred and twenty-nine feet (229'-0") north of the Convention Avenue north curb line to a point approximately sixty-four feet (64'-0") farther north and encroaching upon the east footway of South 33rd Street approximately four feet seven inches (4'-7") toward the west, as depicted as "Proposed Encroachments 3 Wall" on the proposed plan attached hereto as Fig. 1.

## Part 4 (Retaining Wall 2)

A proposed set of retaining walls, located along the north Right-of-Way line of Convention Avenue, from a point approximately twenty-two feet (22'-0") east of the Civic Center Boulevard east curb line to a point approximately ninety-four feet (94'-0") farther east and encroaching upon the north footway of Convention Avenue approximately fourteen feet five inches (14'-5") toward the south, as depicted as "Proposed Encroachments 11 Walls" on the proposed plan attached hereto as Fig. 1.

## Part 5 (Retaining Wall 3)

A proposed retaining wall, located along the north Right-of-Way line of Convention Avenue, from a point approximately one hundred and thirty-one feet (131'-0") east of the Civic Center Boulevard east curb line to a point approximately two hundred and thirty-five feet (235'-0") farther east and encroaching upon the north footway of Convention Avenue approximately

# City of Philadelphia

BILL NO. 220517-AA continued

Certified Copy

twenty-four feet four inches (24'-4") toward the south, as depicted as "Proposed Encroachments 10 Plantings and 11 Walls" on the proposed plan attached hereto as Fig. 1.

## Part 6 (Retaining Wall 4)

A proposed set of retaining walls, located along the north Right-of-Way line of Convention Avenue, from a point approximately three hundred and sixty-six feet (366'-0") east of the Civic Center Boulevard east curb line to a point approximately two hundred and sixteen feet (216'-0") farther east and encroaching upon the north footway of Convention Avenue approximately five feet eleven inches (5'-11") toward the south, as depicted as "Proposed Encroachments 18 Wall" on the proposed plan attached hereto as Fig. 1.

## Part 7 (Utility Drain 1)

A proposed trench drain and inlet, located along the east Right-of-Way line of South 33rd Street, from a point approximately one hundred and ninety-five feet (195'-0") north of the Convention Avenue north curb line to a point approximately ninety-five feet (95'-0") farther north and encroaching upon the east footway of South 33rd Street approximately three feet two inches (3'-2") toward the west, as depicted as "Encroachment 1 Inlet" and "Encroachment 2 Trench Drain & Lateral" on the proposed plan attached hereto as Fig. 2.

## Part 8 (Utility Drain 2)

A proposed set of Philadelphia Fire Department service connections, located along the north Right-of-Way line of Convention Avenue, from a point approximately forty-six feet (46'-0") east of the Civic Center Boulevard east curb line to a point approximately six feet (6'-0") farther east and encroaching upon the north footway of Convention Avenue approximately seven feet eleven inches (7'-11") toward the south, as depicted as "Encroachment 3 (3) 4-Way Fire Department Connections" on the proposed plan attached hereto as Fig. 2.

## Part 9 (Utility Drain 3)

A proposed set of trench drains, located along the north Right-of-Way line of Convention Avenue, from a point approximately one hundred thirty feet (130'-0") east of the Civic Center Boulevard east curb line to a point approximately four hundred and thirty-nine feet (439'-0") farther east and encroaching upon the north footway of Convention Avenue approximately twenty-one feet six inches (21'-6") toward the south, as depicted as "Encroachment 4 Trench Drain & Lateral," "Encroachment 5 Cistern Pressure Relief Overflow Vents," "Encroachment 6 Wall Drainage Lateral," "Encroachment 7 Trench Drain & Lateral," "Encroachment 8 Trench Drain & Lateral," "Encroachment 9 Pipe Run," and "Encroachment 10 Trench Drain & Lateral" on the proposed plan attached hereto as Fig. 2.

## Part 10 (Utility Drain 4)

A proposed set of Philadelphia Fire Department service connections, located along the west Right-of-Way line of Health Sciences Drive, from a point approximately two hundred and thirty-eight feet (238'-0") north of the Convention Avenue north curb line to a point approximately fifteen feet (15'-0") farther north and encroaching upon the west footway of Health Sciences Drive approximately two feet one inch (2'-1") toward the east, as depicted as "Encroachments

# City of Philadelphia

BILL NO. 220517-AA *continued*

Certified Copy

11 (3) 4-way Fire Department Connections” and “Encroachment 12 6-way Fire Pump Test Header” on the proposed plan attached hereto as Fig. 2.

Clear passable sidewalk, with a minimum width of eighteen feet six inches (18'-6") on South 33<sup>rd</sup> Street and a minimum width of six feet eight inches (6'-8") on Convention Avenue, is to remain after installation.

## Part 11 (Wayfinding Sign 1)

A proposed post mounted wayfinding sign, located along the east Right-of-Way line of South 33<sup>rd</sup> Street, from a point approximately twenty-three feet six inches (23'-6") south of the South Street south Right-of-Way line to a point approximately three inches (0'-3") farther south and encroaching into the east footway of South 33<sup>rd</sup> Street, starting from a line offset approximately nine feet two inches (9'-2") west of the east Right-of-Way line extending approximately four feet three inches (4'-3") farther west, with a lower edge not less than eight feet (8'-0") above finished grade, as depicted as “Proposed Encroachments 29 Private Vehicle Direction Sign (VDI)” on the proposed plan attached hereto as Fig. 1A.

## Part 12 (Wayfinding Sign 2)

A proposed post mounted wayfinding sign, located along the south Right-of-Way line of South Street, from a point approximately fifty-nine feet (59'-") west of the Health Sciences Drive west Right-of-Way line to a point approximately three inches (0'-3") farther west and encroaching into the south footway of South Street, starting from a line offset approximately four feet four inches (4'-4") north of the south Right-of-Way line extending approximately four feet three inches (4'-3") farther north, with a lower edge not less than eight feet (8'-0") above finished grade, as depicted as “Proposed Encroachments 28 Private Vehicle Direction Sign (VDI)” on the proposed plan attached hereto as Fig. 1A.

## Part 13 (Wayfinding Sign 3)

A proposed post mounted wayfinding sign, located along the west Right-of-Way line of Health Sciences Drive, from a point approximately two hundred and fifty-two feet (252'-0") south of the South Street south Right-of-Way line to a point approximately three inches (0'-3") farther south and encroaching into the west footway of Health Sciences Drive, starting from a line offset approximately nine feet eight inches (9'-8") east of the west Right-of-Way line extending approximately four feet three inches (4'-3") farther east, with a lower edge not less than eight feet (8'-0") above finished grade, as depicted as “Proposed Encroachments 27 Private Vehicle Direction Sign (VDI)” on the proposed plan attached hereto as Fig. 1A.

## Part 14 (Wayfinding Sign 4)

A proposed post mounted wayfinding sign, located along the west Right-of-Way line of Health Sciences Drive, from a point approximately three hundred and eleven feet five inches (311'-5") south of the South Street south Right-of-Way line to a point approximately three inches (0'-3") farther south and encroaching into the west footway of Health Sciences Drive, starting from a line offset approximately nine feet eight inches (9'-8") east of the west Right-of-Way line extending approximately four feet three inches (4'-3") farther east, with a lower edge not less

# City of Philadelphia

BILL NO. 220517-AA *continued*

Certified Copy

than eight feet (8'-0") above finished grade, as depicted as "Proposed Encroachments 27 Private Vehicle Direction Sign (VDI)" on the proposed plan attached hereto as Fig. 1A.

## Part 15 (Wayfinding Sign 5)

A proposed post mounted wayfinding sign, located along the west Right-of-Way line of Health Sciences Drive, from a point approximately twenty-nine feet one inches (29'-1") north of the Convention Avenue north Right-of-Way line to a point approximately three inches (0'-3") farther north and encroaching into the west footway of Health Sciences Drive, starting from a line offset approximately eleven feet 2 inches (11'-2") east of the west Right-of-Way line extending approximately four feet three inches (4'-3") farther east, with a lower edge not less than eight feet (8'-0") above finished grade, as depicted as "Proposed Encroachments 26 Private Vehicle Direction Sign (VDI)" on the proposed plan attached hereto as Fig. 1.

## Part 16 (Wayfinding Sign 6)

A proposed post mounted wayfinding sign, located along the west Right-of-Way line of Health Sciences Drive, from a point approximately thirty-two feet (32'-0") south of the Convention Avenue south Right-of-Way line to a point approximately three inches (0'-3") farther south and encroaching into the west footway of Health Sciences Drive, starting from a line offset approximately two inches (0'-2") east of the west Right-of-Way line extending approximately four feet three inches (4'-3") farther east, with a lower edge not less than eight feet (8'-0") above finished grade, as depicted as "Proposed Encroachments 24 Private Vehicle Direction Sign (VDI)" on the proposed plan attached hereto as Fig. 1.

## Part 17 (Wayfinding Sign 7)

A proposed post mounted wayfinding sign, located along the east Right-of-Way line of Health Sciences Drive, from a point approximately two hundred and twelve feet 1 inch (212'-1") north of the Convention Avenue north Right-of-Way line to a point approximately three inches (0'-3") farther north and encroaching into the east footway of Health Sciences Drive, starting from a line offset approximately ten feet two inches (10'-2") west of the east Right-of-Way line extending approximately four feet three inches (4'-3") farther west, with a lower edge not less than eight feet (8'-0") above finished grade, as depicted as "Proposed Encroachments 22 Private Vehicle Direction Sign (VD2)" on the proposed plan attached hereto as Fig. 1.

## Part 18 (Wayfinding Sign 8)

A proposed post mounted wayfinding sign, located along the north Right-of-Way line of Convention Avenue, from a point approximately thirty-three feet two inches (33'-2") west of the Health Sciences Drive west Right-of-Way line to a point approximately three inches (0'-3") farther west and encroaching into the north footway of Convention Avenue, starting from a line offset approximately fifteen feet seven inch (15'-7") south of the north Right-of-Way line extending approximately four feet three inches (4'-3") farther south, with a lower edge not less than eight feet (8'-0") above finished grade, as depicted as "Proposed Encroachments 21 Private Vehicle Direction Sign (VDI)" on the proposed plan attached hereto as Fig. 1.

## Part 19 (Wayfinding Sign 9)

# City of Philadelphia

A proposed post mounted wayfinding sign, located along the north Right-of-Way line of Convention Avenue, from a point approximately ninety-two feet three inches (92'-3") west of the Health Sciences Drive west Right-of-Way line to a point approximately three inches (0'-3") farther west and encroaching into the north footway of Convention Avenue, starting from a line offset approximately fifteen feet seven inches (15'-7") south of the north Right-of-Way line extending approximately four feet three inches (4'-3") farther south, with a lower edge not less than eight feet (8'-0") above finished grade, as depicted as "Proposed Encroachments 22 Private Vehicle Direction Sign (VD2)" on the proposed plan attached hereto as Fig. 1.

## Part 20 (Wayfinding Sign 10)

A proposed post mounted wayfinding sign, located along the north Right-of-Way line of Convention Avenue, from a point approximately one hundred and ninety-two feet ten inches (192'-10") west of the Health Sciences Drive west Right-of-Way line to a point approximately three inches (0'-3") farther west and encroaching into the north footway of Convention Avenue, starting from a line offset approximately fifteen feet seven inches (15'-7") south of the north Right-of-Way line extending approximately four feet three inches (4'-3") farther south, with a lower edge not less than eight feet (8'-0") above finished grade, as depicted as "Proposed Encroachments 9 Private Vehicle Direction Sign (VD2)" on the proposed plan attached hereto as Fig. 1.

## Part 21 (Wayfinding Sign 11)

A proposed post mounted wayfinding sign, located along the north Right-of-Way line of Convention Avenue, from a point approximately sixty-two feet five inches (62'-5") east of the South 33<sup>rd</sup> Street east Right-of-Way line to a point approximately three inches (0'-3") farther east and encroaching into the north footway of Convention Avenue, starting from a line offset approximately twenty-five feet five inches (25'-5") south of the north Right-of-Way line extending approximately four feet three inches (4'-3") farther south, with a lower edge not less than eight feet (8'-0") above finished grade, as depicted as "Proposed Encroachments 25 Private Vehicle Direction Sign (VD2)" on the proposed plan attached hereto as Fig. 1.

## Part 22 (Non-Standard Bollards)

A proposed set of seven (7) bollards located along the east Right-of-Way line of South 33<sup>rd</sup> Street, from a point approximately two hundred thirteen feet five inches (213'-5") north of the Convention Avenue north Right-of-Way line to a point approximately fifty-eight feet two inches (58'-2") farther north and encroaching into the west footway of South 33<sup>rd</sup> Street, starting from a line offset approximately fifteen feet eleven inches (15'-11") west of the east Right-of-Way line extending approximately three feet (3'-0") farther west, as depicted as "Proposed Encroachment 4 Concrete Seat-Bollards" on the proposed plan attached hereto as Fig. 1.

SECTION 2. The construction, use and maintenance of the Encroachment described and listed in Section 1 shall be in accordance with the laws, rules and regulations of the City of Philadelphia, and specifically those of the Department of Licenses and Inspections, the Department of Streets, and the Art Commission, provided that the Department of Streets, in its

# City of Philadelphia

BILL NO. 220517-AA *continued*

Certified Copy

sole, unreviewable discretion, may allow minor variations of the dimension limits of Section 1, within standard tolerances of current engineering practice.

SECTION 3. Before exercising any rights or privileges under this Ordinance, Owner must first obtain or have its contractor(s) obtain all required permits, licenses and approvals from all appropriate departments, boards, agencies or commissions. No such department, board, agency or commission shall be required to issue any such permit, license or approval solely because this Ordinance has been enacted, it being the express intent of this Ordinance not to supersede any other provision of law governing the issuance of such permits, licenses or approvals. In addition, before exercising any rights and privileges under this Ordinance, Owner shall enter into an agreement (“Agreement”) with the appropriate City department or departments, satisfactory to the City Solicitor, to provide that Owner, *inter alia*:

- (a) Maintains and keeps in good repair and working order the Encroachments to the satisfaction of the Streets Department;
- (b) agrees that upon one hundred and eighty (180) days notice from the City, it shall remove the Encroachment(s) at no cost and expense to the City of Philadelphia when given written notice to do so by the City of Philadelphia to accommodate a municipal or municipal-sponsored construction project;
- (c) shall secure all necessary permits, licenses and approvals from all appropriate departments, agencies, boards or commissions of the City as may be required by regulation or law. No such department, board, agency or commission shall be required to issue any such permit, license or approval solely because this Ordinance has been enacted;
- (d) shall assume the costs of all changes and adjustments to, and relocation or abandonment of City utilities and City structures wherever located as may be necessary by the reason of the construction of the Encroachment;
- (e) shall carry public liability and property damage insurance, co-naming the City of Philadelphia as an insured party, in such amounts as shall be satisfactory to the City Solicitor, or in lieu thereof, submit documentation in form and content acceptable to the City that Owner is self-insured and is providing the City of Philadelphia the same coverage and benefits had the insurance requirements been satisfied by an insurance carrier authorized to do business in the Commonwealth of Pennsylvania;
- (f) shall insure that all construction contractors for the Encroachment carry public liability and property damage insurance, naming the City of Philadelphia as an insured party in such amounts as shall be reasonably satisfactory to the City Solicitor;
- (g) shall give the City and all public utility companies the right-of-access, ingress and egress for the purpose of inspection, maintenance, alteration, relocation or reconstruction of any

# City of Philadelphia

BILL NO. 220517-AA *continued*

Certified Copy

of their respective facilities which may lie within the public footway adjacent to the Encroachment described in Section 1;

- (h) indemnify and hold harmless the City, its officers, employees and agents from and against any and all loss resulting from injury to, or death to persons or damage to properties arising out of, resulting from, or in any manner caused by the presence, location, use, operation, installation, maintenance, replacement or removal of the Encroachment. Owner shall also agree to release the City from any and all claims relating to the Encroachment, including if ordered removed or when street, sidewalk or utility construction occurs; and
- (i) furnish the City with either a bond with corporate surety in an amount required by the Department of Streets and in a form satisfactory to the Law Department to insure the compliance with all the terms and conditions of this Ordinance and the Agreement, or in lieu thereof, submit documentation in a form and content acceptable to the City that Owner self-assumes the liabilities and obligations normally covered by the Surety Bond.

SECTION 4. The City Solicitor shall include in the Agreement such other terms and conditions as shall be deemed necessary to protect the interests of the City.

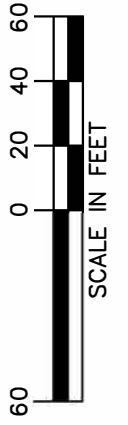
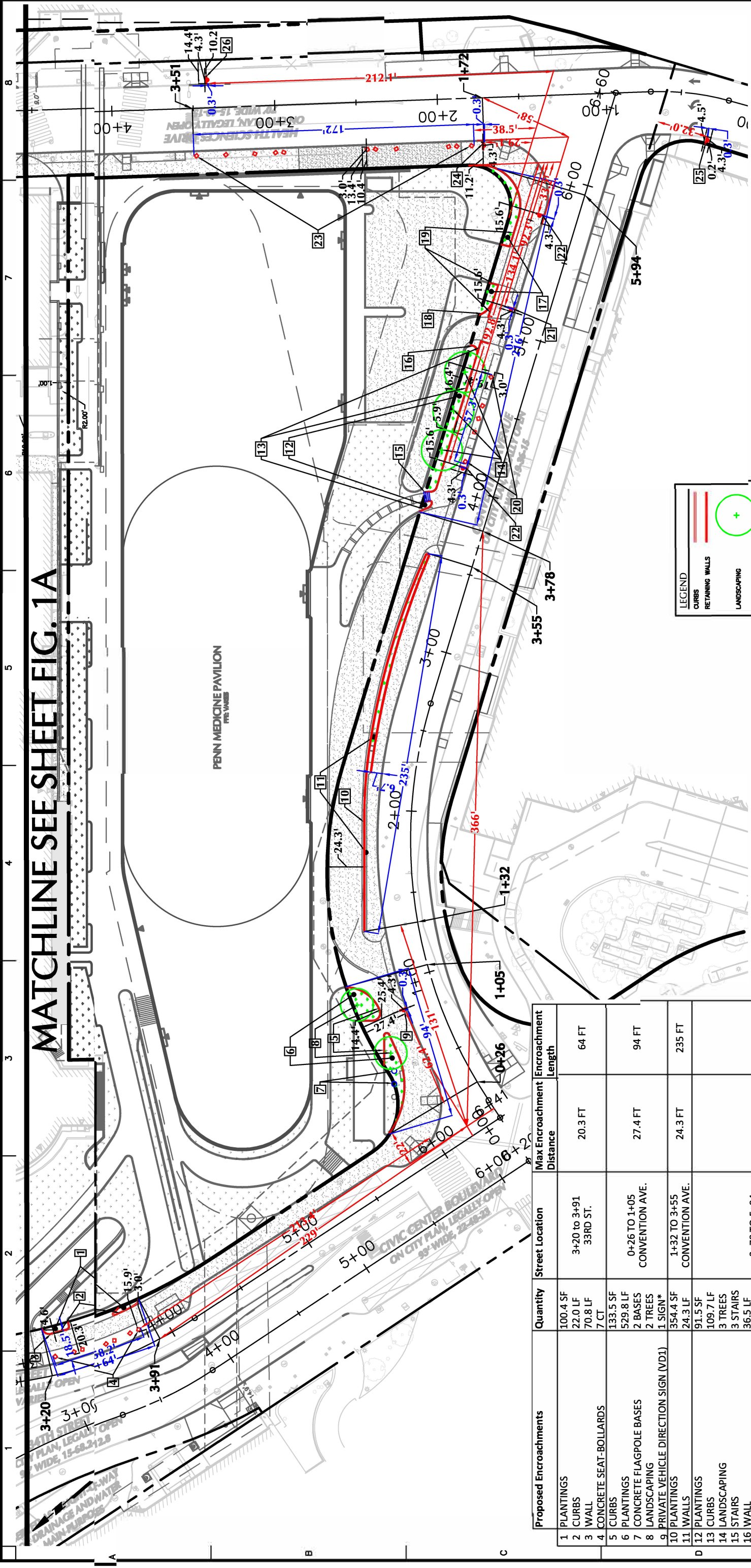
SECTION 5. The permission granted to Owner to install, own, and maintain the Encroachment described in Section 1 shall expire without any further action by the City of Philadelphia if Owner has not entered into an Agreement and satisfied all requirements of the Agreement that are listed in Section 3 of this Ordinance within one (1) year after this Ordinance becomes law.

SECTION 6. Fig. 1, Fig. 1A, Fig. 2, Fig. 3, and Fig. 6 to this Ordinance shall be kept on file by the Chief Clerk and shall be available for public inspection.

SECTION 7. This Ordinance shall not become effective unless the sum of two hundred dollars (\$200.00), toward costs thereof, is paid into the City Treasury within sixty (60) days after the date this Ordinance becomes law.



Fig. 1 to Bill 220517



NOTE:  
THIS PLAN IS BASED ON CURRENT DESIGN AND PERMITTING DOCUMENTS. MINOR MODIFICATIONS WILL OCCUR AND SHOULD BE ANTICIPATED WITH FINAL CONSTRUCTION DOCUMENTS.

LEGEND	
	CURBS
	RETAINING WALLS
	LANDSCAPING
	PLANTINGS
	CONCRETE SEAT-BOLLARDS
	PRIVATE VEHICLE DIRECTION SIGN

MATCHLINE SEE SHEET FIG. 1A

PENN MEDICINE PAVILION  
THE VAULTS

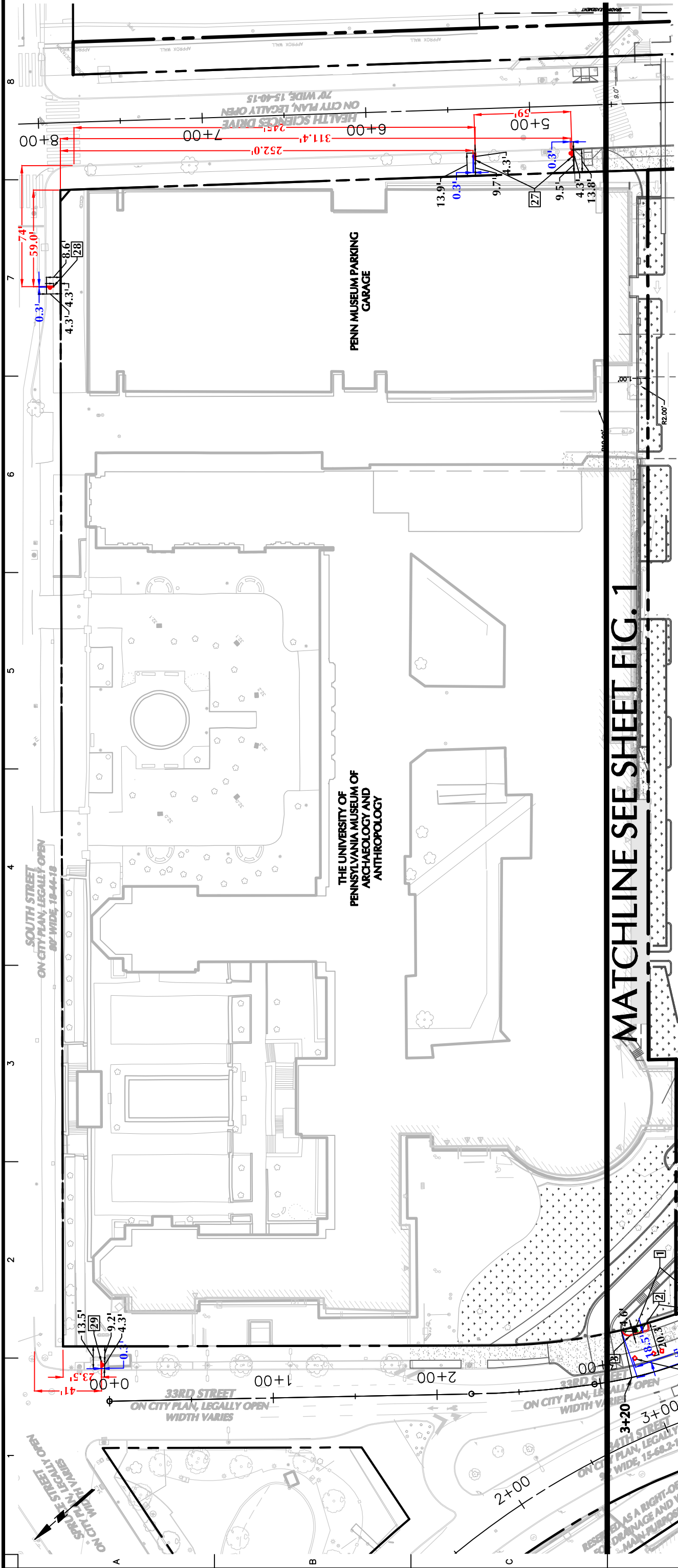
<p><b>LANGAN</b> 1818 Market Street, Suite 3300 Philadelphia, PA 19103 T: 215.845.8800 F: 215.845.8901 www.langan.com</p> <p>Langan Engineering, Environmental, Surveying and Landscape Architecture, D.P.C. S.A. Langan Engineering, Environmental, Surveying and Landscape Architecture, D.P.C. Langan Engineering and Environmental Services, Inc. Langan CT, Inc. Langan International LLC Collectively known as Langan</p>	<p>Project <b>PENNFIRST PAVILION</b></p> <p>PHILADELPHIA PENNSYLVANIA</p>	<p>Drawing Title <b>RIGHT-OF-WAY ENCROACHMENTS: GROUND LEVEL</b></p>	<p>Drawing No. <b>FIG. 1</b></p>
	<p>Project No. 220075501</p> <p>Date 15 NOVEMBER 2019</p> <p>Scale 1" = 60'</p> <p>Drawn By BXP</p> <p>Checked By JCW</p> <p>Submission Date</p>	<p>Project No. 220075501</p> <p>Date 15 NOVEMBER 2019</p> <p>Scale 1" = 60'</p> <p>Drawn By BXP</p> <p>Checked By JCW</p> <p>Submission Date</p>	

Proposed Encroachments	Quantity	Street Location	Max Encroachment Distance	Encroachment Length
1 PLANTINGS	100.4 SF	3+20 to 3+91 33RD ST.	20.3 FT	64 FT
2 CURBS	22.0 LF			
3 WALL	70.8 LF			
4 CONCRETE SEAT-BOLLARDS	7 CT			
5 CURBS	133.5 SF	0+26 TO 1+05 CONVENTION AVE.	27.4 FT	94 FT
6 PLANTINGS	529.8 LF			
7 CONCRETE FLAGPOLE BASES	2 BASES			
8 LANDSCAPING	2 TREES			
9 PRIVATE VEHICLE DIRECTION SIGN (VD1)	1 SIGN*	1+32 TO 3+55 CONVENTION AVE.	24.3 FT	235 FT
10 PLANTINGS	354.4 SF			
11 WALLS	24.3 LF			
12 PLANTINGS	91.5 SF			
13 CURBS	109.7 LF	3+78 TO 5+94 CONVENTION AVE.	19.4 FT	216 FT
14 LANDSCAPING	3 TREES			
15 STAIRS	36.5 LF			
16 WALL	350 SF			
17 PLANTINGS	22.9 LF	1+72 TO 3+51 HEALTH SCIENCES DR.	14.4 FT	178 FT
18 WALL	91.0 LF			
19 CURBS	5 CT			
20 CONCRETE SEAT-BOLLARDS	1 SIGN*			
21 PRIVATE VEHICLE DIRECTION SIGN (VD1)	1 SIGN*			
22 PRIVATE VEHICLE DIRECTION SIGNS (VD2)	2 SIGNS**			
23 CONCRETE SEAT-BOLLARDS	11 CT			
24 PRIVATE VEHICLE DIRECTION SIGN (VD1)	1 SIGN*			
25 PRIVATE VEHICLE DIRECTION SIGN (VD1)	1 SIGN*			
26 PRIVATE VEHICLE DIRECTION SIGN (VD1)	1 SIGN*			

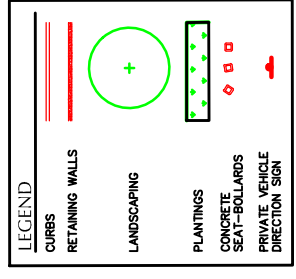
Date	Description	No.
6/15/2022	REVISED PER PSD COMMENTS	
6/6/2022	REORGANIZATION OF CHART	
6/15/2021	ADDITION OF SIGNS	
4/6/2021	SEAT-BOLLARDS AND SIGNS	
1/29/2020	REVISED PER PSD COMMENTS	

\*VD1 is a 70" h x 51" w sign 90" above sidewalk grade on aluminum post  
\*\*VD2 is a 35" h x 51" w sign 90" above sidewalk grade on aluminum post

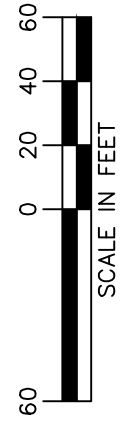
Fig. 1A to Bill 220517



MATCHLINE SEE SHEET FIG. 1



NOTE:  
THIS PLAN IS BASED ON CURRENT DESIGN AND PERMITTING DOCUMENTS. MINOR MODIFICATIONS WILL OCCUR AND SHOULD BE ANTICIPATED WITH FINAL CONSTRUCTION DOCUMENTS.

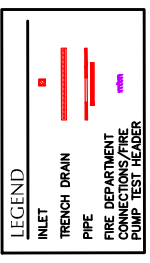
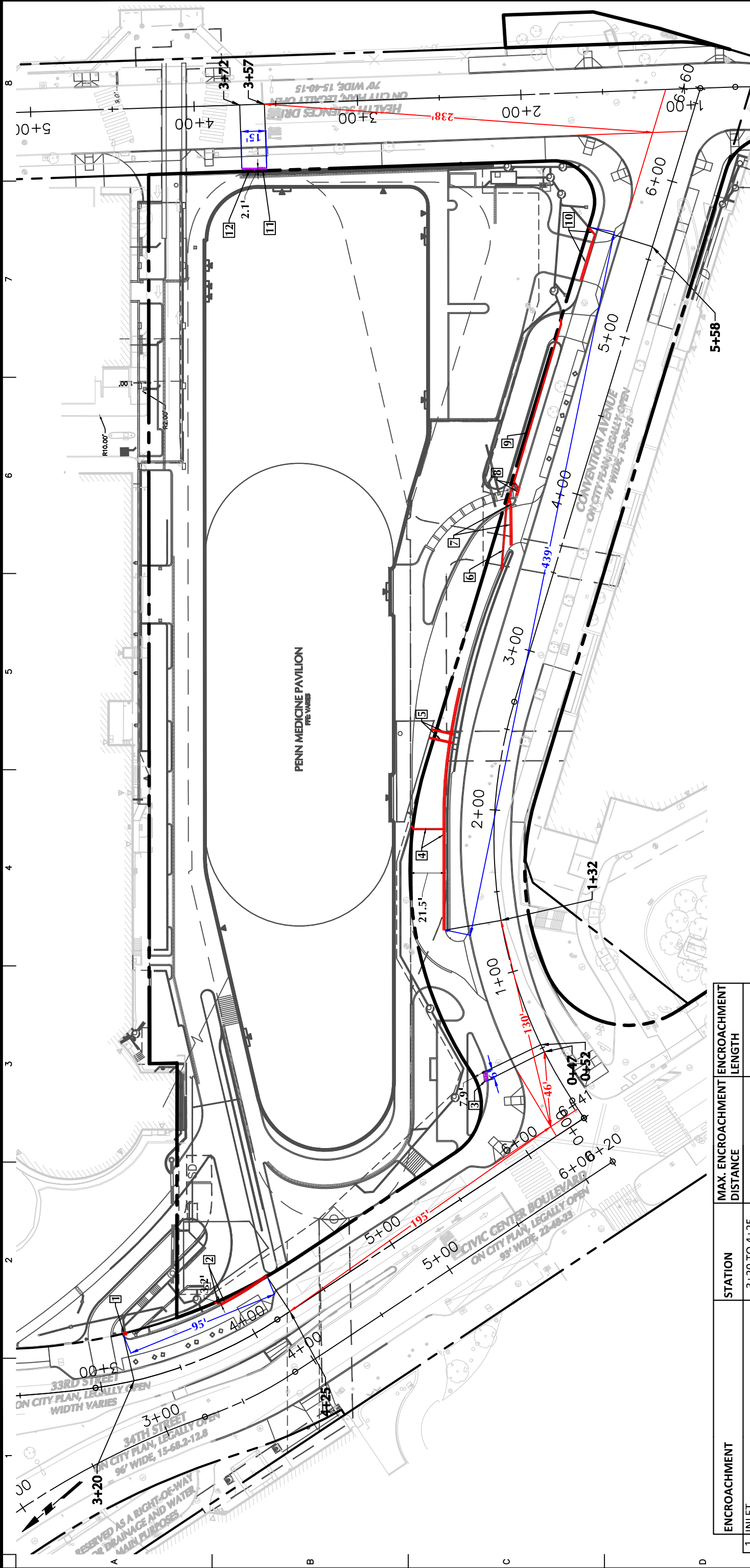


Proposed Encroachments	Quantity	Street Location	Max Encroachment Distance	Encroachment Length
27 PRIVATE VEHICLE DIRECTION SIGN (VDI)	2 SIGNS*	HEALTH SCIENCES DR.	13.9 FT	N/A
28 PRIVATE VEHICLE DIRECTION SIGN (VDI)	1 SIGN*	SOUTH STREET	8.6 FT	N/A
29 PRIVATE VEHICLE DIRECTION SIGN (VDI)	1 SIGN*	33RD ST.	13.5 FT	N/A

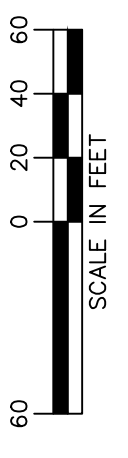
\*VDI is a 70" h x 51" w sign 90° above sidewalk grade on aluminum post

<p><b>LANGAN</b></p> <p>1818 Market Street, Suite 3300 Philadelphia, PA 19103 T: 215.845.8900 F: 215.845.8901 www.langan.com</p> <p>Langan Engineering, Environmental, Surveying and Landscape Architecture, D.P.C. S.A. Langan Engineering, Environmental, Surveying and Landscape Architecture, D.P.C. Langan Engineering and Environmental Services, Inc. Langan CT, Inc. Langan International LLC Collectively known as Langan</p>	Project	Drawing Title	Project No.	Drawing No.
	<p><b>PENNFIRST PAVILION</b></p> <p>PHILADELPHIA PENNSYLVANIA</p>	<p><b>RIGHT-OF-WAY ENCROACHMENTS: GROUND LEVEL</b></p>	<p>220075501</p>	<p>220075501</p>
<p>6/15/2022 REORGANIZATION OF CHART</p> <p>6/6/2022 REORGANIZATION OF CHART</p>	<p>REVISIONS</p>	<p>15 JUNE 2021</p>	<p>1" = 60'</p>	<p><b>FIG. 1A</b></p>
<p>Date</p>	<p>Description</p>	<p>Drawn By</p>	<p>Checked By</p>	<p>Submission Date</p>
<p>No.</p>	<p>Sheet 2 of 2</p>	<p>CSS</p>	<p>JCW</p>	<p></p>

Fig. 2 to Bill 220517



NOTE:  
THIS PLAN IS BASED ON CURRENT DESIGN AND PERMITTING DOCUMENTS. MINOR MODIFICATIONS MAY OCCUR AND SHOULD BE INDICATED WITH FINAL CONSTRUCTION DOCUMENTS.



ENCROACHMENT	STATION	MAX. ENCROACHMENT DISTANCE	ENCROACHMENT LENGTH
1 INLET	3+20 TO 4+25 33RD ST	3.2 FT	95 FT
2 TRENCH DRAIN & LATERAL	0+47 TO 0+52 CONVENTION AVE	7.9 FT	6 FT
3 (3) 4-WAY FIRE DEPARTMENT CONNECTIONS	1+32 TO 5+58 CONVENTION AVE	21.5 FT	439 FT
4 TRENCH DRAIN & LATERAL	3+57 TO 3+72 CONVENTION AVE	2.1 FT	15 FT
5 CISTERN PRESSURE RELIEF OVERFLOW VENTS			
6 WALL DRAINAGE LATERAL			
7 TRENCH DRAIN & LATERAL			
8 TRENCH DRAIN & LATERAL			
9 PIPE RUN			
10 TRENCH DRAIN & LATERAL			
11 (3) 4-WAY FIRE DEPARTMENT CONNECTIONS			
12 6-WAY FIRE PUMP TEST HEADER			

**LANGAN**  
1818 Market Street, Suite 3300  
Philadelphia, PA 19103  
T: 215.845.8900 F: 215.845.8901 www.langan.com  
Langran Engineering, Environmental, Surveying and Landscape Architecture, D.P.C. S.A.  
Langran Engineering, Environmental, Surveying and Landscape Architecture, D.P.C.  
Langran Engineering and Environmental Services, Inc.  
Langran CT, Inc.  
Langran International LLC  
Collectively known as Langran

Project  
**PENNFIRST PATIENT PAVILION**  
PHILADELPHIA PENNSYLVANIA

Drawing Title  
**RIGHT-OF-WAY ENCROACHMENTS: UTILITIES**

Drawing No.  
**FIG. 2**

Project No.  
220075501

Date  
29 JANUARY 2018

Scale  
1" = 60'

Drawn By  
BXP

Checked By  
JCW

Submission Date

Project No.  
220075501

Date  
29 JANUARY 2018

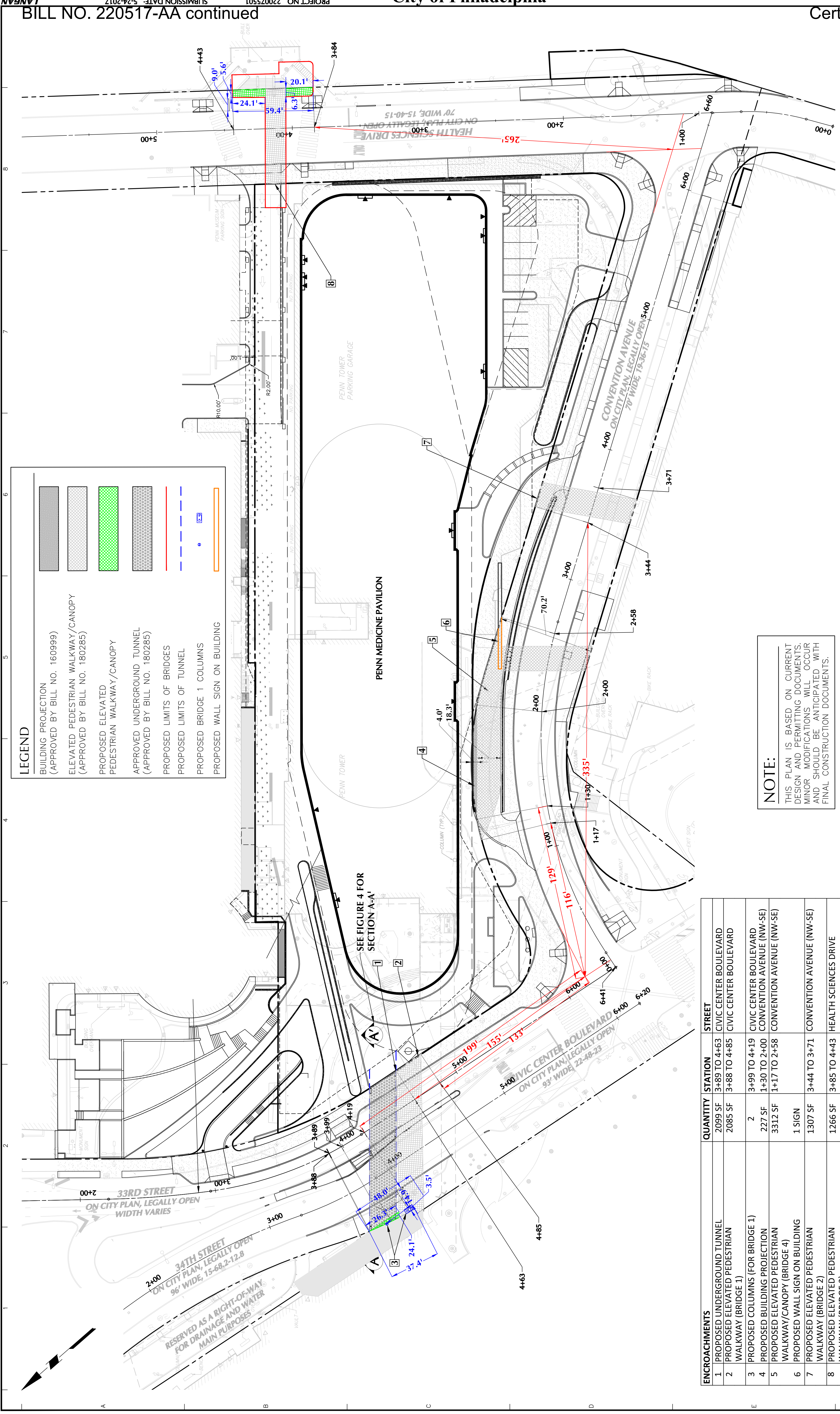
Scale  
1" = 60'

Drawn By  
BXP

Checked By  
JCW

Submission Date

**Fig. 3 to Bill 220517**



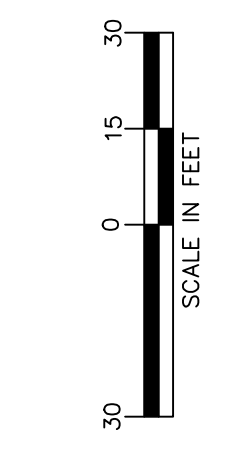
**LEGEND**

[Grey hatched pattern]	BUILDING PROJECTION (APPROVED BY BILL NO. 160999)
[Light grey hatched pattern]	ELEVATED PEDESTRIAN WALKWAY/CANOPY (APPROVED BY BILL NO. 180285)
[Green hatched pattern]	PROPOSED ELEVATED PEDESTRIAN WALKWAY/CANOPY
[Dark grey hatched pattern]	APPROVED UNDERGROUND TUNNEL (APPROVED BY BILL NO. 180285)
[Red dashed line]	PROPOSED LIMITS OF BRIDGES
[Blue dashed line]	PROPOSED LIMITS OF TUNNEL
[Orange circle]	PROPOSED BRIDGE 1 COLUMNS
[Orange rectangle]	PROPOSED WALL SIGN ON BUILDING

**NOTE:**  
 THIS PLAN IS BASED ON CURRENT DESIGN AND PERMITTING DOCUMENTS. MINOR MODIFICATIONS WILL OCCUR AND SHOULD BE ANTICIPATED WITH FINAL CONSTRUCTION DOCUMENTS.

ENCROACHMENTS	QUANTITY	STATION	STREET
1 PROPOSED UNDERGROUND TUNNEL	2099 SF	3+89 TO 4+63	CIVIC CENTER BOULEVARD
2 PROPOSED ELEVATED PEDESTRIAN WALKWAY (BRIDGE 1)	2085 SF	3+88 TO 4+85	CIVIC CENTER BOULEVARD
3 PROPOSED COLUMNS (FOR BRIDGE 1)	2	3+99 TO 4+19	CIVIC CENTER BOULEVARD
4 PROPOSED BUILDING PROJECTION	227 SF	1+30 TO 2+00	CONVENTION AVENUE (NW-SE)
5 PROPOSED ELEVATED PEDESTRIAN WALKWAY/CANOPY (BRIDGE 4)	3312 SF	1+17 TO 2+58	CONVENTION AVENUE (NW-SE)
6 PROPOSED WALL SIGN ON BUILDING	1 SIGN	3+44 TO 3+71	CONVENTION AVENUE (NW-SE)
7 PROPOSED ELEVATED PEDESTRIAN WALKWAY (BRIDGE 2)	1307 SF	3+44 TO 3+71	CONVENTION AVENUE (NW-SE)
8 PROPOSED ELEVATED PEDESTRIAN WALKWAY (BRIDGE 3)	1266 SF	3+85 TO 4+43	HEALTH SCIENCES DRIVE

REVISIONS	Date	Description	No.
6/15/2020		REVISIONS PER PSD COMMENTS	
6/06/2022		REORGANIZATION OF CHART	
4/06/2021		WALL SIGN	
2/07/2020		REVISIONS PER PSD COMMENTS	
1/29/2020		REVISIONS PER PSD COMMENTS	



SIGNATURE: CHRISTOPHER HAGER  
 PROFESSIONAL ENGINEER PA. Lic. No. 63172  
 DATE SIGNED

**LANGAN**  
 1818 Market Street, Suite 3000, Philadelphia, PA 19103  
 T: 215.646.8900 F: 215.646.8901 www.langan.com  
 Langan Engineering, Environmental, Surveying and Landscape Architecture, P.C. S.A.  
 Langan Engineering, Environmental, Surveying and Landscape Architecture, P.C.  
 Langan Engineering and Environmental Services, Inc.  
 Langan International LLC  
 Collectively known as Langan

Project: PENNIFIRST PATIENT PAVILION  
 PHILADELPHIA PENNSYLVANIA

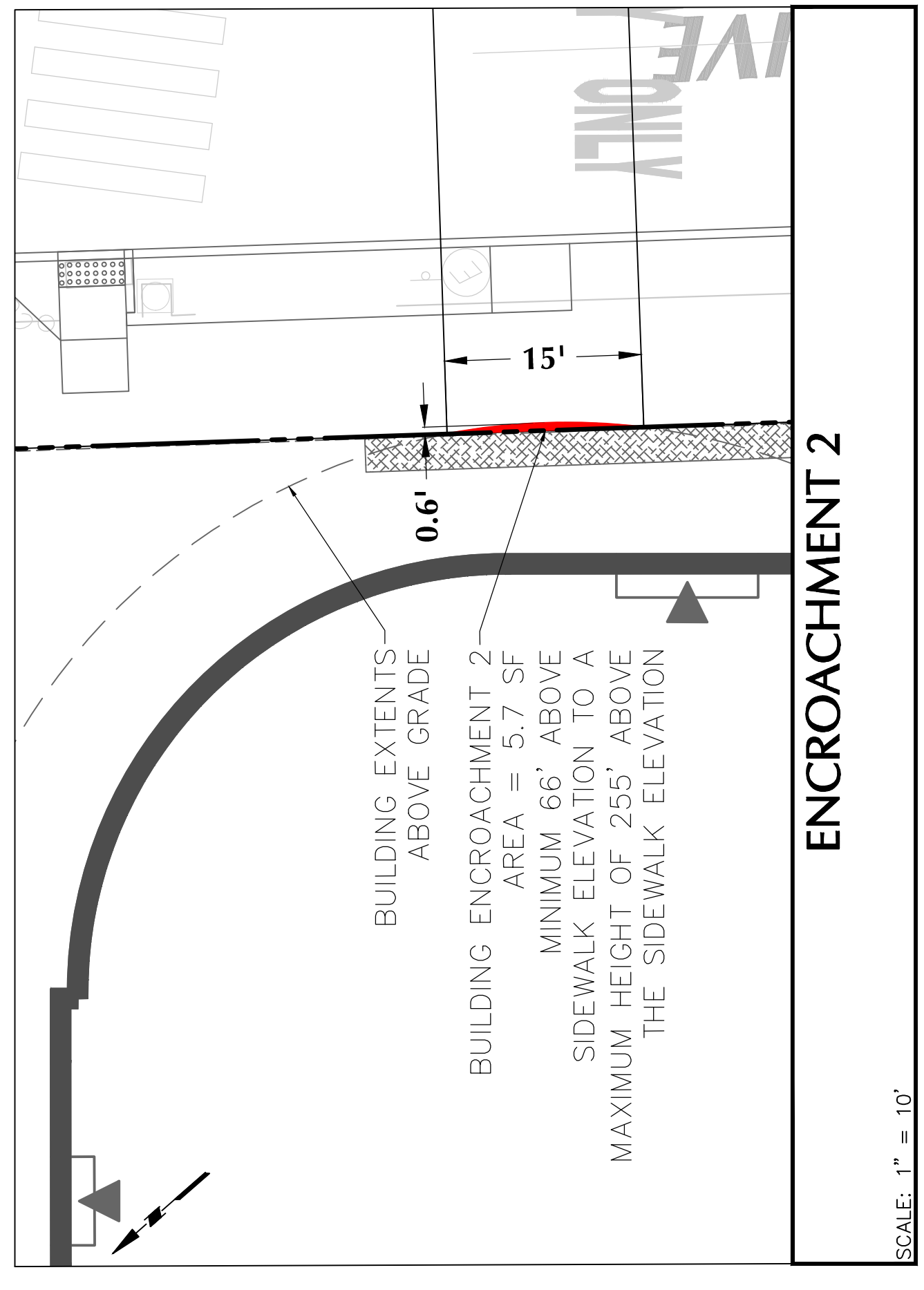
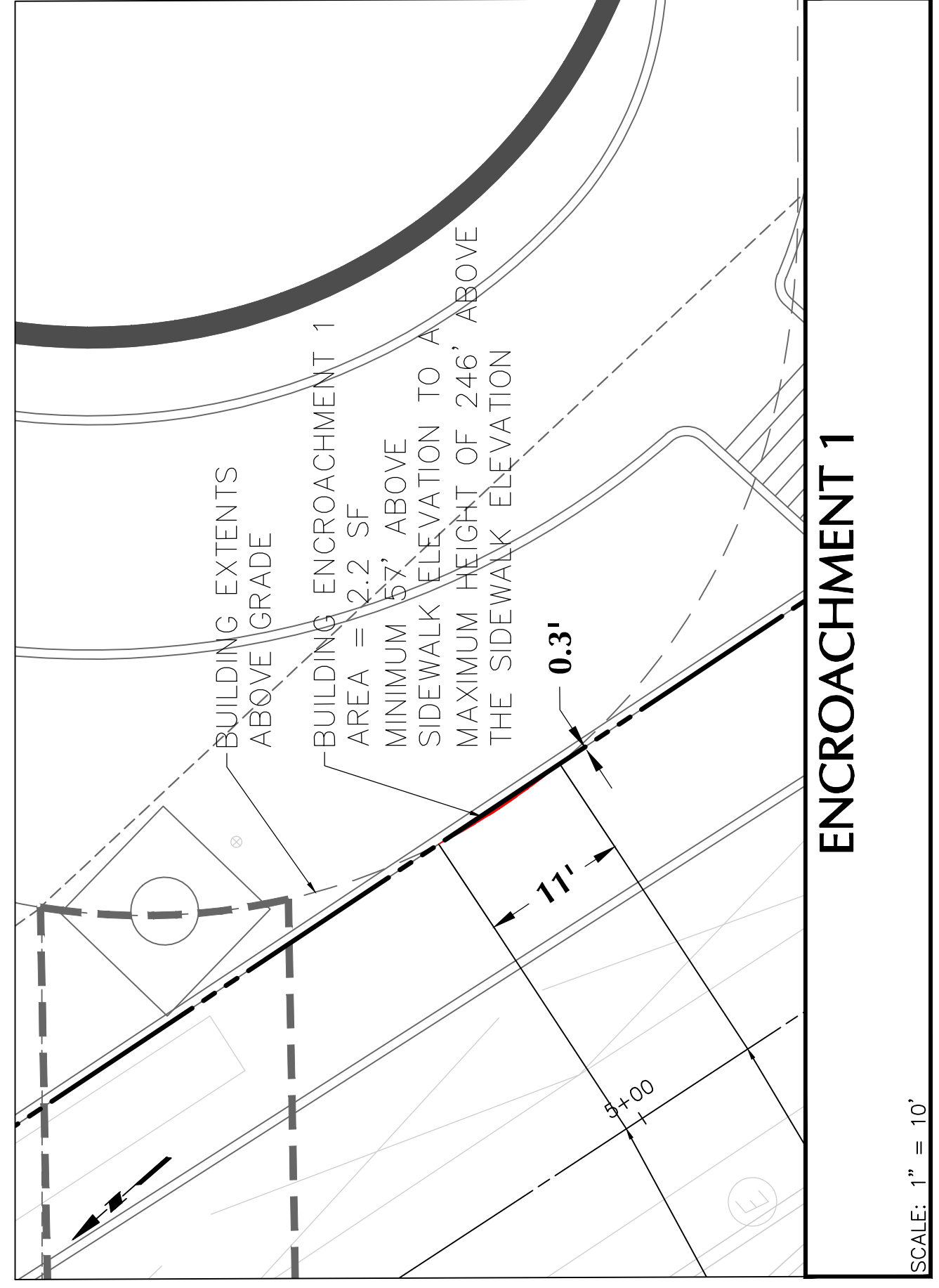
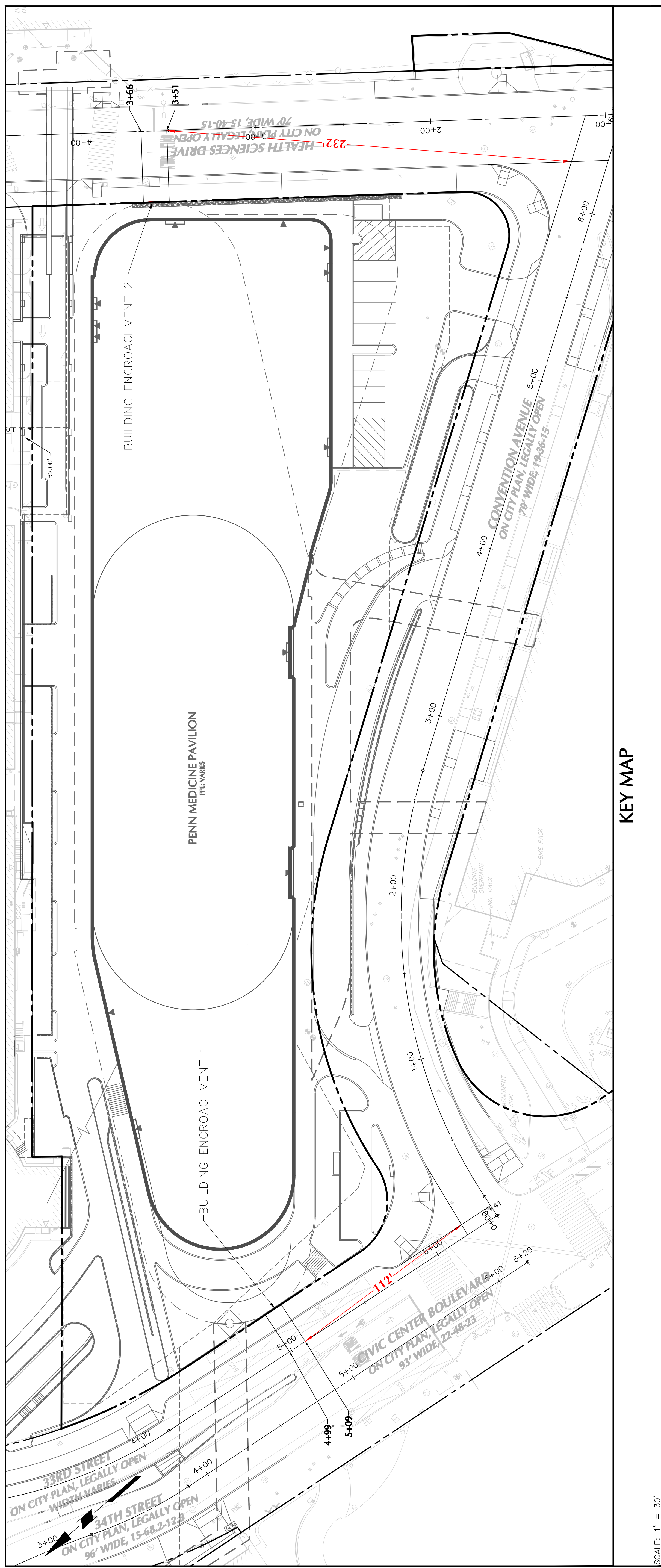
Drawing Title: RIGHT-OF-WAY ENCROACHMENTS: ELEVATED/BELOW-GRADE

Project No. 22075501  
 Date 5-24-2017  
 Scale 1" = 30'  
 Drawn By MB  
 Checked By KIM  
 Submission Date

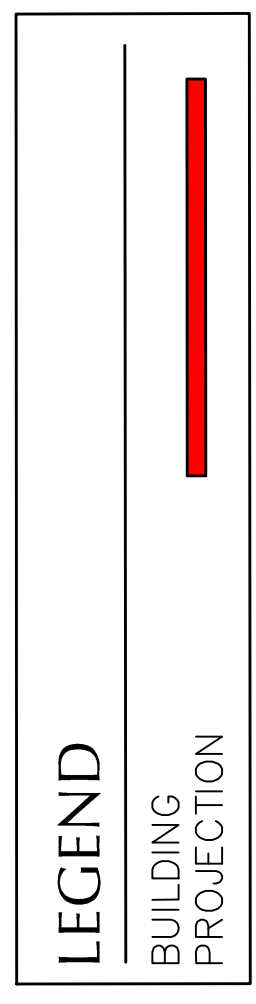
FIG. 30  
 Sheet 3 of 6



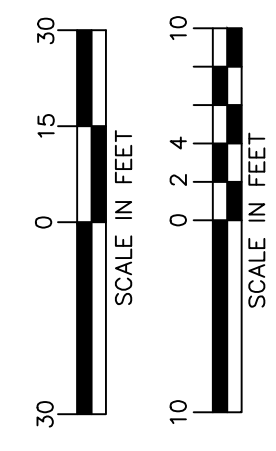
Fig. 6 to Bill 220517



BUILDING ENCROACHMENT	QUANTITY	STATION
1	2.2 SF	4+99 TO 5+09 CIVIC CENTER BOULEVARD
2	5.7 SF	3+51 TO 3+66 HEALTH SCIENCES DRIVE



**NOTE:**  
 THIS PLAN IS BASED ON CURRENT DESIGN AND PERMITTING DOCUMENTS. MINOR MODIFICATIONS WILL OCCUR AND SHOULD BE ANTICIPATED WITH FINAL CONSTRUCTION DOCUMENTS.



Date	Description	No.
6/6/2022	REORGANIZATION OF CHART	

SIGNATURE: CHRISTOPHER HAGER  
 PROFESSIONAL ENGINEER PA Lic. No. 63172

**LANGAN**  
 1818 Market Street, Suite 3300, Philadelphia, PA 19103  
 T: 215.646.8900 F: 215.646.8901 www.langan.com  
 Langan Engineering, Environmental, Surveying and Landscape Architecture, D.P.C. S.A.  
 Langan Engineering, Environmental, Surveying and Landscape Architecture, D.P.C.  
 Langan Engineering and Environmental Services, Inc.  
 Langan International LLC  
 Collectively known as Langan

Project: PENNIFIRST PATIENT PAVILION  
 PHILADELPHIA PHILADELPHIA PENNSYLVANIA

Drawing Title: RIGHT-OF-WAY ENCROACHMENTS: BUILDING PROJECTIONS

Project No. 22075501  
 Date 29 JANUARY 2019  
 Scale AS NOTED  
 Drawn By BXP  
 Checked By JCW  
 Submission Date

FIG. 609  
 Sheet 6 of 6

# City of Philadelphia

*BILL NO. 220517-AA continued*

Certified Copy

# City of Philadelphia

*BILL NO. 220517-AA continued*

Certified Copy

CERTIFICATION: This is a true and correct copy of the original Bill, Passed by the City Council on March 16, 2023. The Bill was Signed by the Mayor on March 29, 2023.



Michael A. Decker  
Chief Clerk of the City Council